

# FACT BOOK

The Office of Institutional Research is pleased to present the **Boston College Fact Book, 2006-2007**, the 34<sup>th</sup> edition of this publication.

Special thanks are extended to graduate students Kate Eaton and Aideen Gleeson for their diligence

in making this an increasingly more useful reference, at the same time enhancing your university. We welcome your comments and suggestions toward these goals.

The Fact Book is available in its entirety at <http://www.bc.edu/factbook>.

Jessica Greene  
Director, Institutional Research  
Office of Institutional Research, Planning & Assessment

December 2006

---

Strengthened by more than a century and a quarter of dedication to academic excellence, Boston College commits itself to the highest standards of teaching and research in undergraduate, graduate, and professional programs and to the pursuit of a just society through its own accomplishments, the work of its faculty and staff, and the achievements of its graduates. It seeks both to advance its place among the nation's finest universities and to bring to the company of its distinguished peers and to contemporary society the richness of the Catholic intellectual ideal of a mutually illuminating relationship between religious faith and free intellectual inquiry.

Boston College draws inspiration for its academic and societal mission from its distinctive religious tradition. As a Catholic and Jesuit university, it is rooted in a world view that encounters God in all creation and through all human activity, especially in the search for truth in every discipline, in the desire to learn, and in the call to live justly together. In this spirit, the University regards the contribution of different religious traditions and value systems as essential to the fullness of its intellectual life and to the continuous development of its distinctive intellectual heritage.

---

Foreword.....	2
The Mission of Boston College.....	2
A Brief History of Boston College .....	6



---

**&**

Boston College Libraries .....	76
Boston College Library Holdings .....	76
Expenditures for Library Materials .....	76
Digital Library Services.....	77
John J. Burns Library of Rare Books and Special Collections .....	78
Language Laboratory .....	78
University Archives.....	78
Information Technology Services .....	79
Successful Email Deliveries .....	79
Successful Page Deliveries by <i>www.bc.edu</i> Web Server .....	79
Connors Family Learning Center .....	80
McMullen Museum of Art.....	80

**&**

Highlights of Sponsored Activities .....	82
Summary of Sponsored Project Awards.....	82
Sponsored Projects, Source and Application of Funding.....	82

Boston College was founded by the Society of Jesus in 1863, and is one of twenty-eight Jesuit colleges and universities in the United States. With three teachers and twenty-two students, the school opened its doors on September 5, 1864. At the outset and for more than seven decades of its first century, the College remained an exclusively liberal arts institution with emphasis on the Greek and Latin classics, English and modern languages, and with more attention to philosophy than to the physical or social sciences. Religion, of course, had its place in the classroom as well as in the nonacademic life of the college.

Originally located on Harrison Avenue in the South End of Boston, where it shared quarters with the Boston College High School, the College outgrew its urban setting toward the end of its first fifty years. A new location was selected in Chestnut Hill, then almost rural, and four parcels of land were acquired in 1907. A design competition for the development of the campus was won by the firm of Maginnis and Walsh, and ground was broken on June 19, 1909, for the construction of Gasson Hall. It is located on the site of the Lawrence farmhouse, in the center of the original tract of land purchased by Father Gasson, and is built largely of stone taken from the surrounding property.

Later purchases doubled the size of the property, with the addition of the upper campus in 1941, and the lower campus with the acquisition of the Lawrence Basin and adjoining land in 1949. In 1974, Boston College acquired Newton College of the Sacred Heart, a mile-and-a-half from the main campus.

With fifteen buildings standing on forty acres, it is

---

\*

---

- 1857** Father John McElroy, S.J., purchased property in the South End of Boston for a new college.
- 1863** Gov. John A. Andrews signed the charter of Boston College, April 1. First meeting of the Boston College trustees was held on July 6.
- 1864** Boston College opened on September 5, with Father John Bapst, S.J., as president and Father Robert Fulton, S.J., as dean. Twenty-two students were admitted.
- 1877** First Commencement was held. Nine students received A.B. degrees, June 28.
- 1883** The Stylus, the College literary magazine, founded.
- 1907** Father Thomas Gasson, S.J., named president; purchased 31-acre Lawrence farm in Chestnut Hill for new campus.
- 1913** Gasson Hall completed. First graduation held at the Heights, June 18. Four classes enrolled in Gasson in September.
- 1918** Conscription and voluntary enlistment for World War I reduced the College enrollment to 125 in October,

- 1970** Women admitted for degrees in all undergraduate colleges. The modular residences were placed on the lower campus. PULSE, an academic/social action program, was started. The Campus School for multi-handicapped children was begun.
- 1971** The office of president of Boston College and rector of the Boston College Jesuit community were separated on January 1. Installation of Omicron Chapter, Phi Beta Kappa took place on April 6.
- 1972** Father J. Donald Monan, S.J., succeeded Father W. Seavey Joyce, S.J., as president, September 5. The trustees voted to eliminate the Board of Directors and to expand the Board of Trustees to include laymen, November 19. The newly structured Board of Trustees, with 35 members (13 Jesuits), elected Cornelius Owens '36 chairman. The Women's Center was established.
- 1973** The Long-Range Fiscal Planning Committee presented to the Trustees a plan for balanced budgets for the succeeding five years.
- 1974** Newton College of the Sacred Heart became part of Boston College (announced March 11).
- 1975** The Law School moved to the Newton Campus. Edmond's Hall was occupied in September.
- 1976** The New Heights Advancement Campaign to raise \$21 million was begun in April. Over the next five years, more than \$25 million was raised.
- 1979** One thousand friends of Speaker of the House Thomas P. O'Neill, '36, gathered in Washington to establish the O'Neill Chair in American Politics, December 9. The Graduate School of Social Work established a doctoral degree program. The Recreation Complex was named for Athletic Director William J. Flynn.
- 1980** The Jesuit community endowed the Thomas I. Gasson, S.J., Chair for distinguished Jesuit scholars.
- 1982** Walsh Hall residence dedicated to former president Michael P. Walsh, S.J., October 7.
- 1984** O'Neill Library dedicated to Speaker Thomas P. O'Neill, October 14. Doug Flutie awarded Heisman Trophy.
- 1985** The E. Paul Robsham, Jr. Theater Arts Center was dedicated on October 25.
- 1986** Dedication of renovated Bapst Library, dedication of





**Undergraduate Admission (Class of 2010)**

Applicants	26,584
Enrollees	
Men	1,074
Women	1,210
<b>Total Freshman Class</b>	<b>2,284</b>

**Enrollment (Full- and Part-Time; Fall 2006)**

Undergraduate	9,020
Advancing Studies (undergraduate)	729
Graduate & Professional	4,632
<b>Total Enrollment</b>	

&

**2006-2007**

---

**Gregory P. Barber, '69**

Former Chairman

Gregory P. Barber & Associates, Inc.

**Peter W. Bell, '86**

Venture Partner

Highland Capital Partners

**Patrick Carney, '70**

Chairman and Chief Executive Officer

Claremont Companies

**Charles I. Clough, Jr., '64**

Chairman and Chief Executive Officer

Clough Capital Partners

**Kathleen A. Corbet, '82**

President

Standard and Poor's

**\*Robert F. Cotter, '73**

Former President and Chief Operating  
Officer

Starwood Hotels and Resorts Worldwide,  
Inc.

**Robert M. Devlin**

Chairman

Curragh Capital Partners



---

**2006-2007 (Continued)**

---

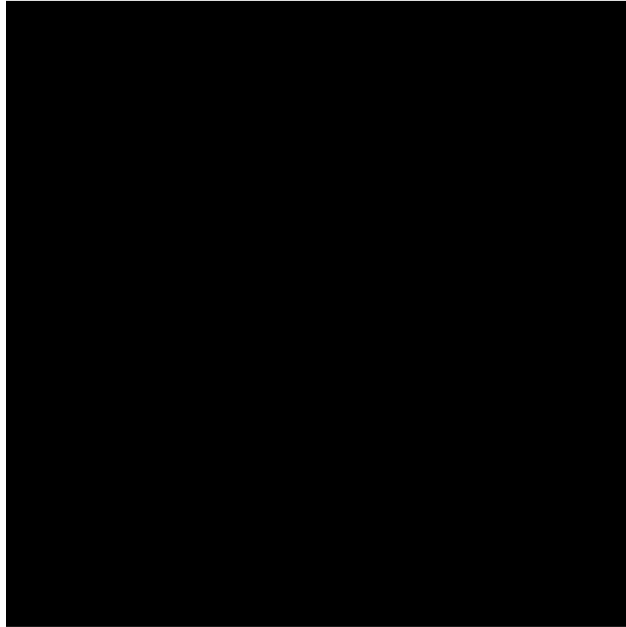
**Salvatore J. Trani**  
Executive Managing Director  
BGC Partners, L.P.

**Thomas A. Vanderslice, '53**  
Private Investor

**Jeffrey P. von Arx, S.J.**  
President  
Fairfield University

**Vincent A. Wasik**  
President  
MCG Global, LLC

Note: Only Boston College degrees listed  
Source: President's Office



With 113 members, the Jesuit Community at Boston College is one of the largest communities in the Society of Jesus. Fifty-four Jesuits serve in the University as members of the administration, faculty, or staff, working either full-time or part-time. A number of Jesuits in the community also offer Ignatian retreats and spiritual direction to faculty, staff, and students. There are 27 Jesuits from more than 20 different countries around the world who are studying for graduate degrees at the University or who are here as visiting scholars.

The main community residence is St. Mary's Hall, but there are also five smaller communities around the perimeter of the campus. Eight Jesuits live in the student residence halls and the four Jesuits who staff St. Ignatius Parish are also part of the Boston College Jesuit Community. For further details, including a list of courses taught by Jesuits at Boston College, see the Jesuit

2006-2007

2006-2007

**President**

William P. Leahy, S.J.

**Chancellor**

J. Donald Monan, S.J.

**Provost and Dean of Faculties**

Cutberto Garza

**Executive Vice President**

Patrick J. Keating

**Vice President for University  
Mission and Ministry** CTtherine

Joseph A. Appleyard, S.J.

**Vice President**

Mary Lou DeLong

**Vice President for Facilities  
Management**

Thomas Devine

**Secretary of the University**

Joseph P. Duffy, S.J.

**Vice President for University Advancement**

James J. Husson

**Vice President for Governmental &  
Community Affairs**

Thomas J. Keady

**Senior Vice President**

James P. McIntyre

**Financial Vice President  
and Treasurer**

Peter C. McKenzie

**Vice President for Information  
Technology Services**

Marian G. Moore

**Vice President and Special Assistant  
to the President**

William B. Neenan, S.J.

**Vice President for Student Affairs**

Cheryl L. Presley

**Vice President for Human Resources**

Leo V. Sullivan

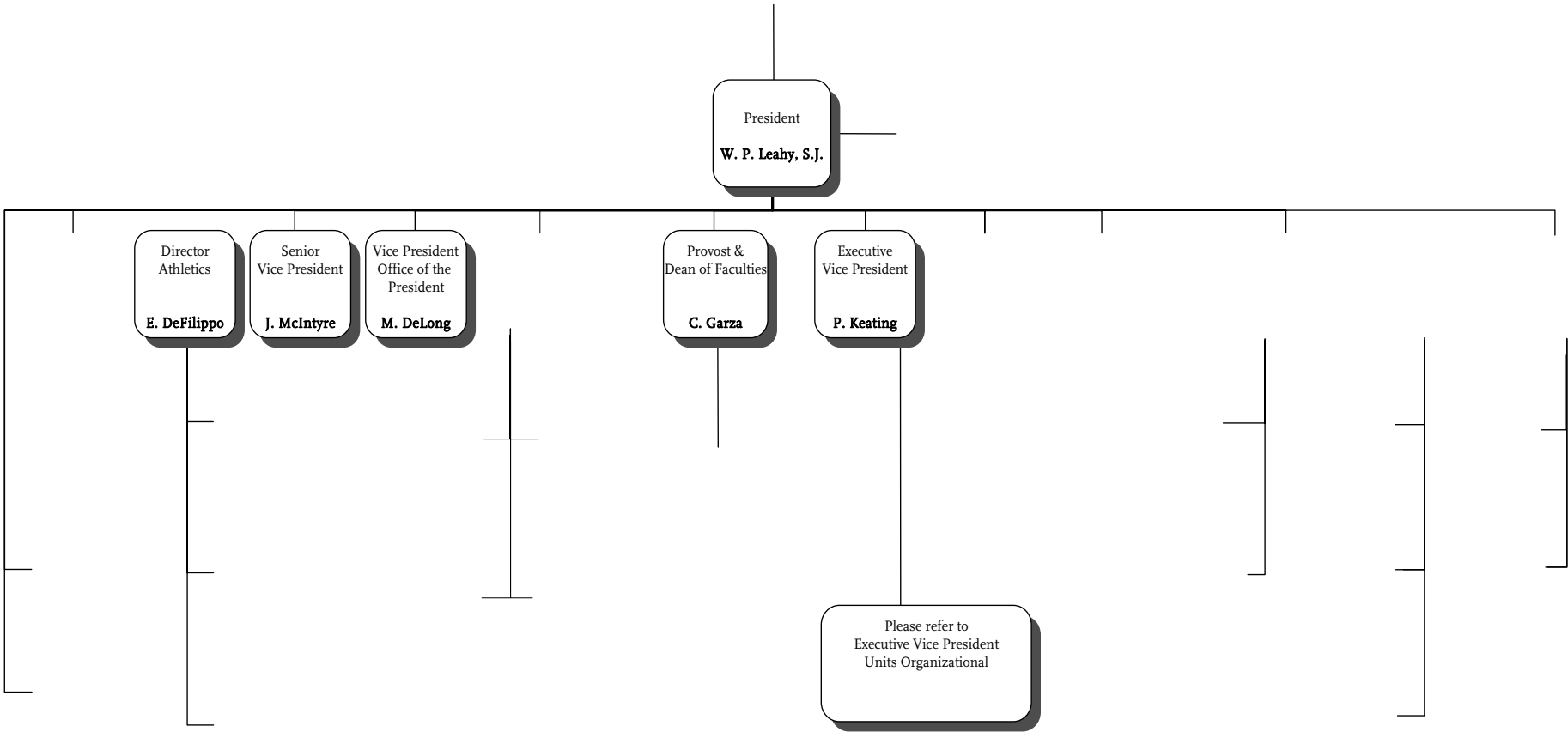
**Office of the Provost and Dean of  
Faculties**Cutberto Garza, Provost  
and Dean of FacultiesPatricia DeLeeuw, Vice Provost for  
FacultiesKevin Bedell, Vice Provost for  
Research

J. Joseph Burns, Associate Academic

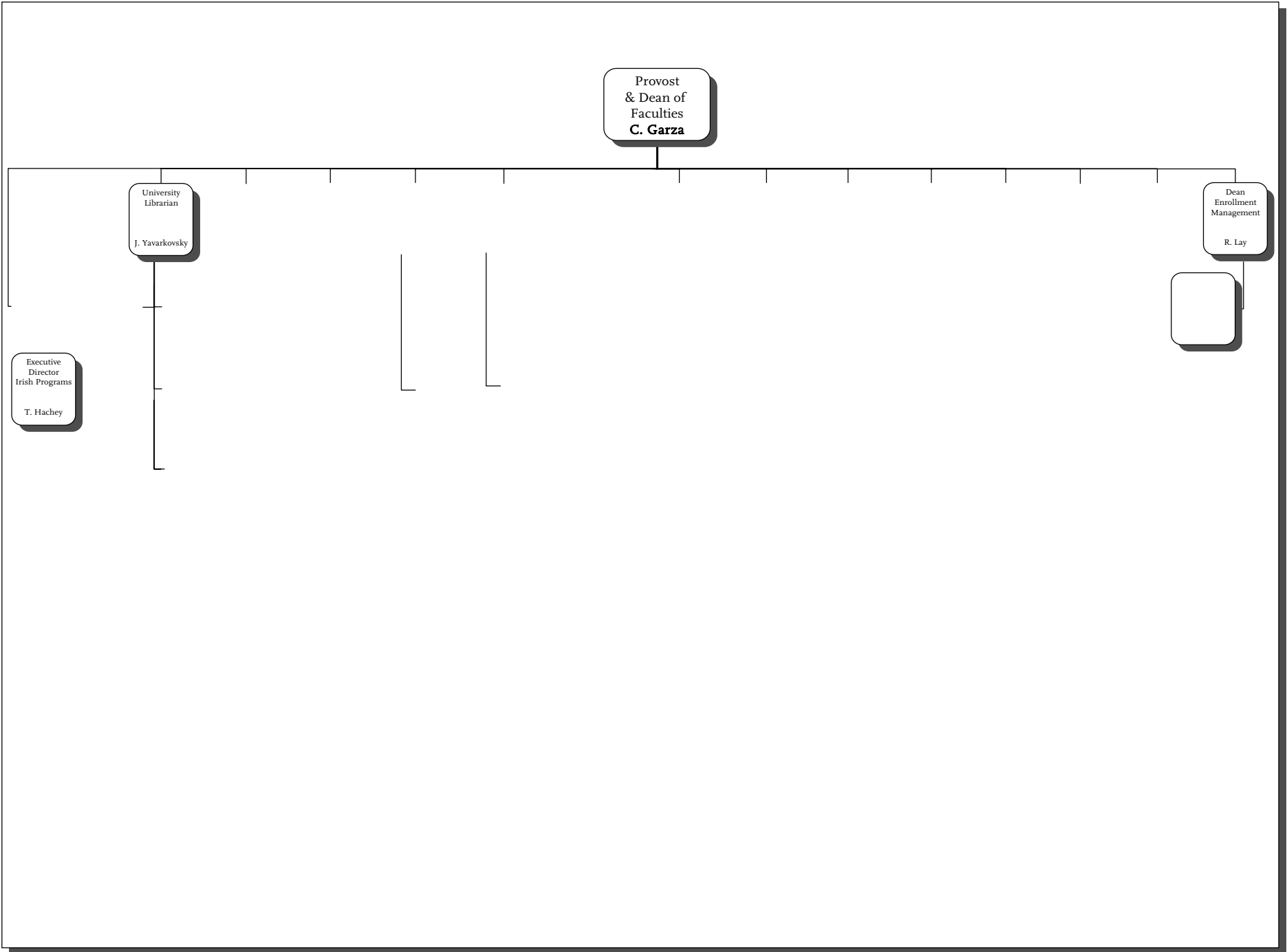
Director of the Center for Governmental &amp; Community Affairs - 8.1 (ntal &amp; )TJ0 -1.2067 t4 &amp;

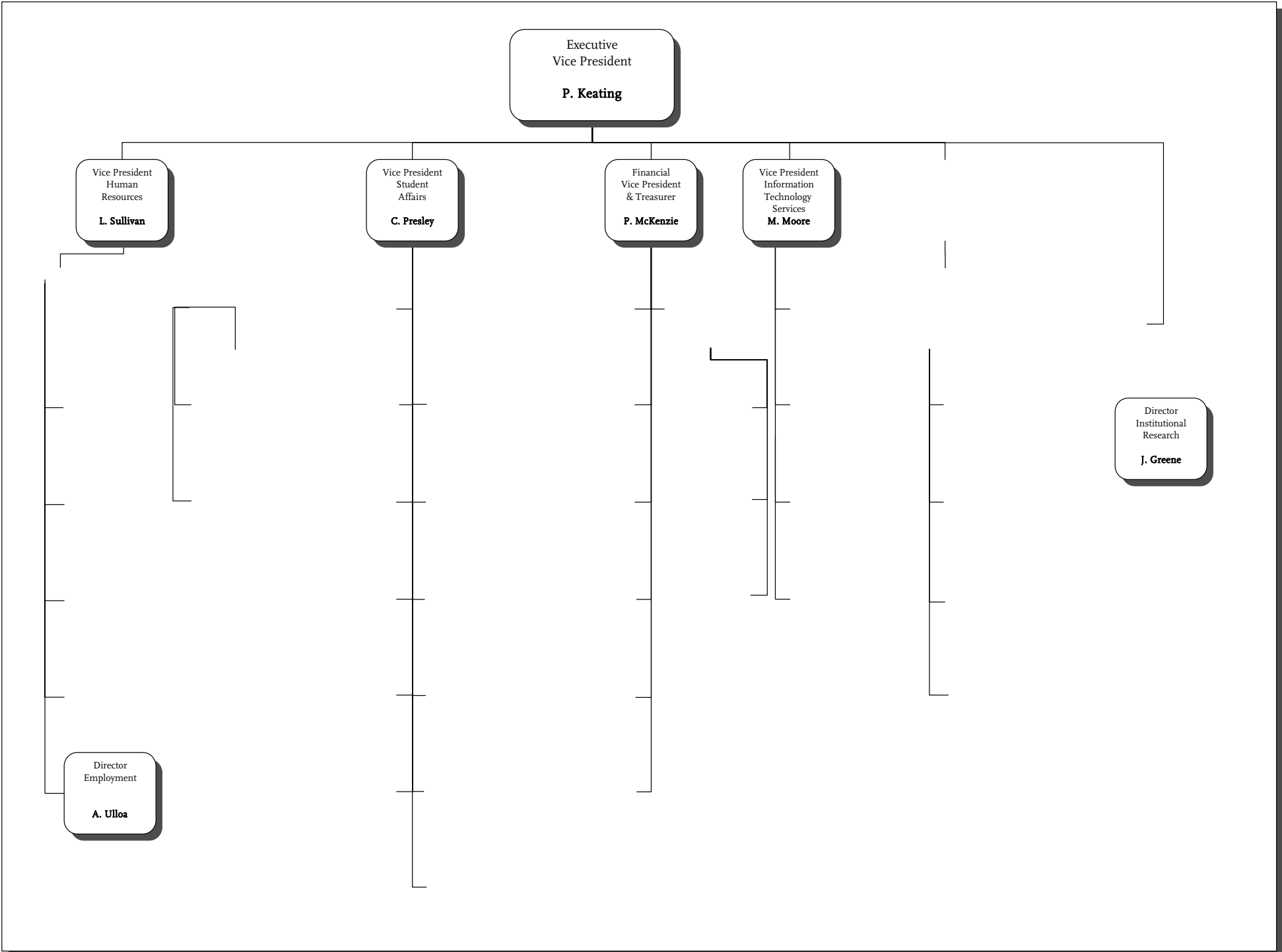
M.

T26-3T42-1









---

**2006-2007**


---

**Undergraduate Admission**

John L. Mahoney, Jr., Director

**Center on Aging & Work**Michael A. Smyer, Co-Director  
Martha Pitt-Catsoupes, Co-Director**AHANA Student Programs**

Ines M. Maturana Sendoya, Director

**Alumni Association**John Feudo, Associate Vice President,  
Alumni Relations**Athletics**

Eugene B. DeFilippo, Jr., Director

**Internal Audit**

Pamela A. Jerskey, Director

**Auxiliary Services**

Patricia Bando, Associate Vice President

**Boisi Center for Religion and American Public Life**

Alan Wolfe, Director

**Bookstore**

Thomas McKenna, Director

**Budget**

Michael T. Callnan, Director

**Campus Ministry**

James D. Erps, S.J., Director

**Campus School**

Philip A. DiMattia, Director

**Capital Construction**

John S. Romeo, Director

**Capital Planning & Engineering**

Mary S. Nardone, Director

**Career Center**

Theresa A. Harrigan, Director

**Church in the 21<sup>st</sup> Century**

Timothy P. Muldoon, Director

**Community Affairs**

William R. Mills, Director

**Compliance and Intellectual Property Management**

Stephen Erickson, Director

**Connors Family Learning Center**

Suzanne M. Barrett, Director

**Continuing Education, Connell School of Nursing**

W. Jean Weyman, Director

**Controller**

Michael J. Driscoll

**Center for Corporate Citizenship**

Bradley K. Googins, Director

**University Counseling Services**

Thomas P. McGuinness, Director

**Development – Annual Giving**

Eric C. Graage, Associate Vice President

**Development – Capital Giving**

Thomas P. Lockerby, Associate Vice President

**Development-Advancement Operations & Planning**

Brenda S. Ricard, Associate Vice President

**Dining Service**

Helen S. Wechsler, Director

**Environmental Health and Safety**

Keith D. Kidd, Director

**Financial Vice President & Treasurer**

Kathy Croft, Director, Administrative Services

**First Year Experience**

Joseph P. Marchese, Director

**University General Counsel**Joseph Herlihy, Esq.  
Nora E. Field, Associate Counsel, Esq.**Health Services**

Thomas I. Nary, M.D., Director

**University Historian**

Thomas H. O'Connor

**Honors Program, College of Arts & Sciences**

Mark F. O'Connor, Director

**Honors Program, Carroll School of Management**

David R. McKenna, Director

**Human Resources**

Robert J. Lewis, Associate Vice President

**Human Resources - Benefits**

John R. Burke, Director

**Human Resources - Children's Center**

Barbara A. Krakowsky, Director

**Human Resources - Compensation**

Halley McLain, Director

**Human Resources - Employee Development**

**2006-2007 (Continued)**

**Presidential Scholars Program**

Dennis J. Sardella, Director

**Public Affairs**

John B. Dunn, Director

**Procurement Services**

Richard J. Geppner, Director

**Institute for Religious Education and Pastoral Ministry**

Thomas Groome, Director

**Residential Life**

Henry J. Humphreys, Director

**Center for Retirement Research**

Alicia H. Munnell, Director

**Institute for Scientific Research**

Brian F. Sullivan, Co-Director

Patricia H. Doherty, Co-Director

**Small Business Development Center**

Joseph P. Andrews, Director

**Office for Sponsored Programs**

John M. Carfora, Director

**Student Affairs**

Sheilah S. Horton, Associate Vice President

James Kreinbring, Executive Assistant to the

Vice President

**Student Development**

Robert A. Sherwood, Dean

**Student Services**

Louise M. Lonabocker, Director

**Theater Arts Center**

Howard Enoch, Director

**Associate Treasurer**

Paul P. Haran, Associate Treasurer and Director of Investments

**Volunteer & Service Learning Center**

Daniel P. Ponsetto, Director

**Center on Wealth & Philanthropy**

Paul G. Schervish, Director

**Weston Observatory**

John E. Ebel, Director

**Winston Center for Leadership & Ethics**

Richard Keely, Program Director

Mary Ann Glynn, Research Director

**Center for Work and Family**

J. Bradley Harrington, Executive Director

Source: Department of Human Resources

**D**

**2006-2007**

**Arts & Sciences**

Biology ..... Thomas Chiles

Chemistry ..... Amir H. Hoveyda

Classical Studies..... Charles F. Ahern

Communication .....Dale Herbeck

Computer Science.....Robert Muller

Economics..... Marvin C. Kraus

English..... Mary Crane

Fine Arts..... John Michalczyk

Geology & Geophysics..... Alan L. Kafka

German Studies.....Michael Resler

History .....Marilynn Johnson

Mathematics .....Gerard E. Keough

Music..... T. Frank Kennedy

Philosophy .....Patrick Byrne

Physics..... Kevin Bedell

Political Science..... Susan Shell

Psychology..... James Russell

Romance Languages & Literatures..... Dwayne E. Carpenter

Slavic & Eastern Languages..... Maxim Shrayer

Sociology..... Juliet Schor

Theatre..... John H. Houchin

Theology..... Kenneth Himes

**Carroll School of Management**

Accounting.....Billy Soo

Business Law ..... Christine N. O'Brien

Finance ..... Hassan Tehranian

Information Systems.....James Gips

Marketing.....Gerald Smith

Operations & Strategic Management ..... Samuel B. Graves

Organization Studies.....Stephen Borgatti

**Connell School of Nursing**

Adult Health..... Robin Wood

Community Health..... Katherine Frame

Maternal & Child Health .....Sandra Mott

Psychiatric/Mental Health..... Anne Norris

Manafro@omtt.gct

**Lynch School of Education**

Counseling, Developmental & Educational Psychology..... Elizabeth Sparks

Educational Administration

Lanchiatrig A,62d



\*

2005-2006

---

<b>School</b>	<b>Professor</b>		<b>Associate</b>		<b>Assistant</b>		<b>Instructor</b>		<b>Total</b>		<b>Faculty on leave**</b>
	No.	%	No.	%	No.	%	No.	%	No.	%	
Arts & Sciences	159	38%	153	36%							

**D****2005-2006**

<b>Degree</b>	<b>Women</b>		<b>Men</b>		<b>Total</b>	
	No.	%	No.	%	No.	%
Doctorate	235	91%	407	97%	642	95%
Master's	24	9%	13	3%	37	5%
<b>Total</b>	<b>259</b>	<b>100%</b>	<b>420</b>	<b>100%</b>	<b>679</b>	<b>100%</b>

Source: Office of the Provost and Dean of Faculties

**2005-2006**

<b>Rank</b>	<b>Women</b>		<b>Men</b>		<b>Total</b>	
	No.	%	No.	%	No.	%
Professor	70	27%	176	42%	246	36%
Associate	93	36%	153	36%	246	36%
Assistant	72	28%	78	19%	150	23%
Instructor	24	9%	13	3%	37	5%
<b>Total</b>	<b>259</b>	<b>100%</b>	<b>420</b>	<b>100%</b>	<b>679</b>	<b>100%</b>

Source: Office of the Provost and Dean of Faculties

95% of Boston College faculty members hold a doctoral degree.

**By School, 2005-2006**

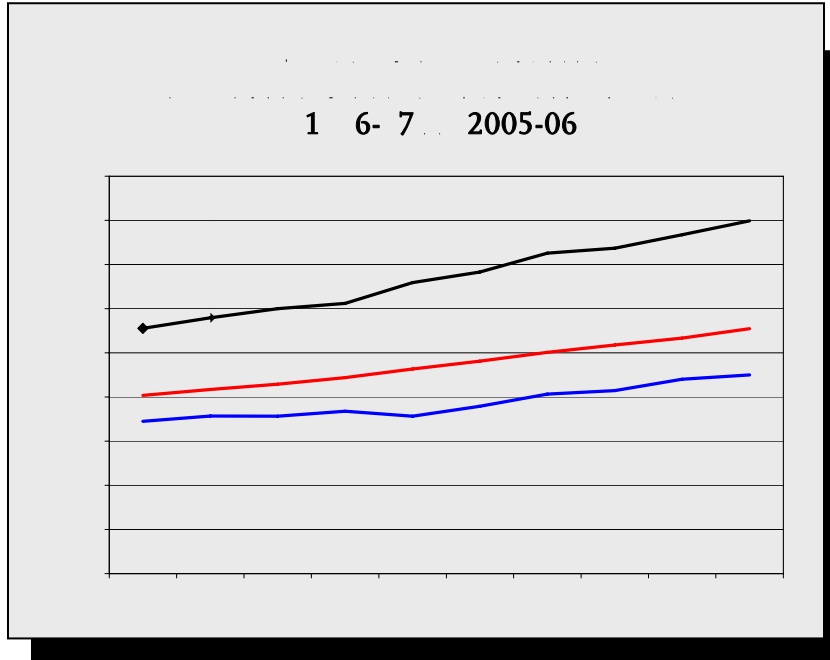
<b>School</b>	<b>No.</b>	<b>%</b>	<b>No.</b>	<b>%</b>	<b>No.</b>	<b>%</b>	<b>No.</b>	<b>%</b>
---------------	------------	----------	------------	----------	------------	----------	------------	----------



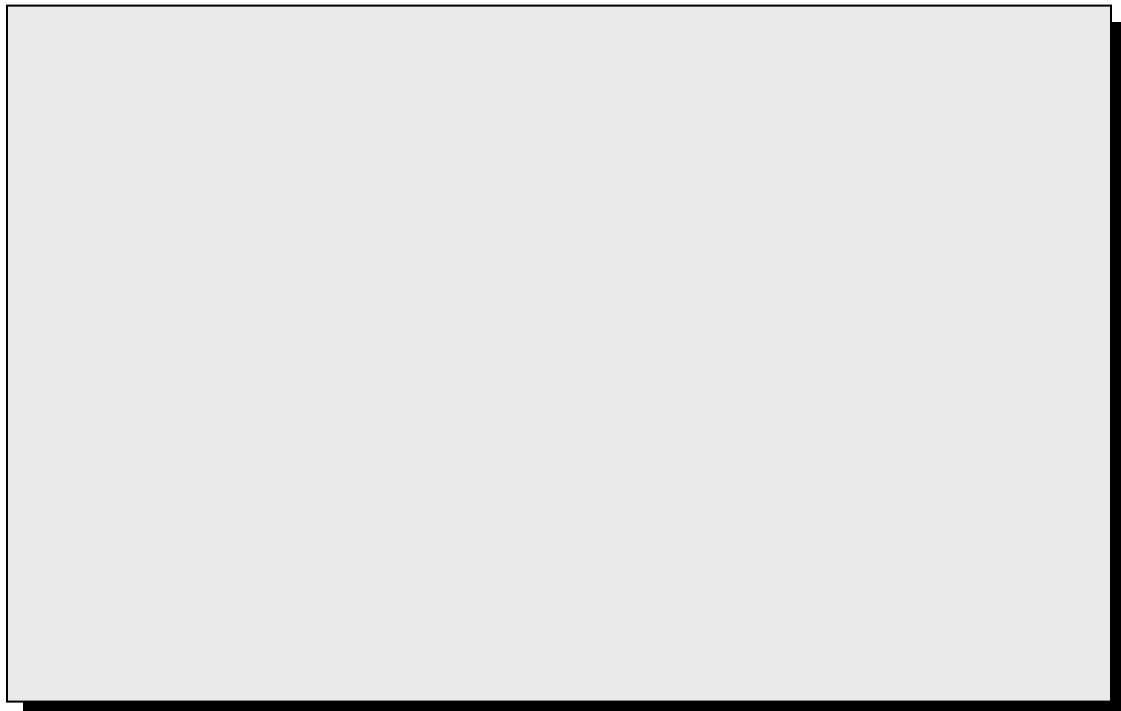
Average by Rank \*

Year	Professor	Associate	Assistant
1996-97	\$111,100	\$80,700	\$69,000
1997-98	\$115,900	\$83,400	\$71,400
1998-99	\$120,000	\$85,800	\$71,300
1999-00	\$122,387	\$88,815	\$73,542
2000-01	\$131,800	\$92,700	\$71,300
2001-02	\$136,600	\$96,300	\$75,800
2002-03	\$145,170	\$100,228	\$81,313
2003-04	\$147,392	\$103,577	\$82,912
2004-05	\$153,500	\$106,700	\$88,100
2005-06	\$159,800	\$111,000	\$90,000

\* Includes salary and fringe benefits  
 Source: Office of the Provost and Dean of Faculties



Boston College Average Compared to AAUP Category I (9-Month Equivalent), 2005-2006 \*



\* Includes salary and fringe benefits  
 Source: Office of the Provost and Dean of Faculties; AAUP \$100 ,000  
 \$120 ,000  
 \$140 ,000  
 \$160 ,000  
 \$180 ,000  
 1996-97 1997-98 1998-99 1999-00 2000-01 2001-02 2002-03 2003-04 2004-05 2005-06





**By Year and Gender**

Fall	Men	Women	Total
1997	1,084	1,084	2,168
1998	1,063	1,184	2,247
1999	1,103	1,181	2,284
2000	1,114	1,132	2,246
2001	940	1,163	2,103
2002	1,150	1,165	2,315
2003	1,055	1,153	2,208
2004	1,090	1,219	2,309
2005	1,097	1,077	2,174
2006	1,074	1,210	2,284

Source: Office of Undergraduate Admission

**Middle 50% Range of SAT Scores**

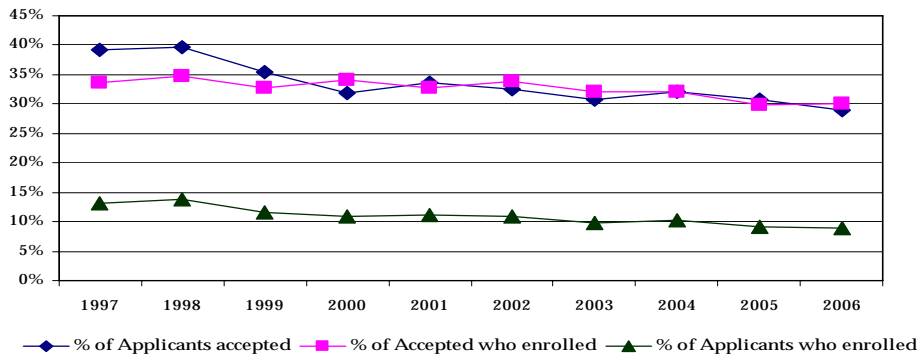
Class	Verbal	Math	Composite
2001	580 - 680	610 - 690	1210 - 1340
2002	590 - 680	610 - 690	1210 - 1350
2003	590 - 680	610 - 690	1210 - 1360
2004	600 - 690	620 - 700	1230 - 1370
2005	600 - 690	620 - 700	1240 - 1380
2006	600 - 690	620 - 710	1250 - 1390
2007	600 - 690	630 - 710	1260 - 1390
2008	610 - 700	630 - 710	1250 - 1400
2009	610 - 700	640 - 720	1260 - 1410

Note: Starting with the Class of 2010, separate score ranges have replaced the single range for the Verbal Score. The new composite score is the combination of all three.

Class	Critical Reading	Writing	Math	Composite
2010	610 - 700	620 - 710	640 - 720	1900 - 2100

Source: Office of Undergraduate Admission

**By Year**



Fall	Applications	Acceptances	Acceptances as a % of Applications	Total Enrollment	Enrollment as a % of Acceptances	Enrollment as a % of Applications
1997	16,455	6,455	39	2,168	34	13
1998	16,373	6,484	40	2,247	35	14
1999	19,746	6,976	35	2,284	33	12
2000	20,743	6,587	32	2,246	34	11
2001	19,059	6,401	34	2,103	33	11
2002	21,133	6,850	32	2,315	34	11
2003	22,424	6,896	31	2,208	32	10
2004	22,451	7,178	32	2,309	32	10
2005	23,823	7,302	31	2,174	30	9
2006	26,584	7,736	29	2,284	30	9

Note: Freshman enrollment reported above is based on deposits received from students accepting the offer of admission on or before the deadline set by the Committee on Admission. Withdrawals may occur during the summer months and the first two weeks in September.

2010

**Geographic Distribution**

	<b>Applications</b>	<b>Acceptances</b>	<b>Enrollment</b>		<b>Applications</b>	<b>Acceptances</b>	<b>Enrollment</b>
Alabama	47	15	2	Nevada	36	5	1
Alaska	9	1	0	New Hampshire	446	117	41
Arizona	143	54	13	New Jersey	2,686	801	238
Arkansas	18	4	0	New Mexico	34	16	3
California	2,653	637	123	New York	4,088	1,246	374
Colorado	247	49	12	North Carolina	171	47	13
Connecticut	1,616	496	174	North Dakota	5	1	0
Delaware	70	27	8	Ohio	492	168	39
District of Columbia	75	26	1	Oklahoma	38	9	3
Florida	849	273	68	Oregon	116	40	9
Georgia	224	72	18	Pennsylvania	1,101	317	81
Hawaii	115	45	11	Rhode Island	356	99	29
Idaho	33	10	5	South Carolina			

## 2010

## Top 12 Colleges and Universities

Georgetown University	University of Pennsylvania	University of Notre Dame
Harvard College	Brown University	Columbia University
Tufts University	Dartmouth College	New York University
Boston University	Cornell University	Yale University

Note: Competitor schools are determined by the number of admitted students applying to the listed colleges. They do not include students of competitor schools who were not admitted to Boston College.

Source: Office of Enrollment Management, 2006 Admitted Student Questionnaire Plus (4,335 student responses)

## Full-Time

Fall*	Applications	Acceptances	Acceptances as a % of Applications	Total Enrollment	Enrollment as a % of Acceptances	Enrollment as a % of Applications
1997	1,338	495	37	247	50	19
1998	1,339	496	35	225	48	17
1999	1,525	447	29	248	55	16
2000	1,363	256	19	142	56	10
2001	1,015	258	25	132	51	13
2002	1,079	130	12	71	55	7
2003	1,123	260	23	124	48	11
2004	942	240	25	122	51	13
2005	1,009	150	15	80	53	8
2006	1,176	123	11	63	51	5

\* Transfer enrollment typically increases 25-40 students second semester

Source: Office of Undergraduate Admission

## By Type of Previous Institution and Gender

Fall*	2-Year Public	2-Year Private	4-Year Public	4-Year Private	Total	Men	Women	Total
1997	22	5	66	154	247	112	135	247
1998	17	8	62	138	225	100	125	225
1999	24	4	59	161	248	95	153	248
2000	10	-	61	71	142	63	79	142
2001	9	2	45	76	132	59	73	132
2002	3	1	24	43	71	32	39	71
2003	13	-	34	77	124	55	69	124
2004	5	-	29	88	122	41	81	122
2005	4	-	24	52	80	38	42	80
2006	2	-	15	46	63	29	34	63

\* Transfer enrollment typically increases 25-40 students second semester

Source: Office of Undergraduate Admission

---



---

**2006 By School, Gender, and Full- and Part-Time**

<b>School</b>	<b>Men</b>	<b>Women</b>	<b>Total</b>	<b>Men</b>	<b>Women</b>	<b>Total</b>	<b>Men</b>	<b>Women</b>	<b>Total</b>
<b>Undergraduate Enrollment</b>									
College of Arts & Sciences	2,867	3,052	5,919	-	-	-	2,867	3,052	5,919
Carroll School of Management	1,291	706	1,997	-	-	-	1,291	706	1,997
Lynch School of Education	116	611	727	-	-	-	116	611	727
Connell School of Nursing	11	365	376	-	1	1	11	366	377
<b>Total Undergraduate Day Students</b>	<b>4,285</b>	<b>4,734</b>	<b>9,019</b>	<b>-</b>	<b>1</b>	<b>1</b>	<b>4,285</b>	<b>4,735</b>	<b>9,020</b>
Woods College of Advancing Studies	184	129	313	190	226	416	374	355	729
<b>Graduate &amp; Professional Enrollment</b>									
Graduate Arts & Sciences	182	161	343	390	338	728	572	499	1,071
Graduate Education	69	319	388	162	424	586	231	743	974

& 2002 2006  
**By School, Gender, and Full- and Part-Time**

	A&S	Ed.	Mgt.	Nurs.	Total	Adv.St.	GA&S	GEd.	GMgt.	GNurs.	GSSW	Law	Total	GAdv.St.	Univ. Total
<b>Fall 2002</b>															
Full-Time	5,895	756	2,045	220	8,916	248	324	372	273	98	297	806	2,170	10	<b>11,344</b>





**By Year**

	Fall Semester			Spring Semester			Annual Average		
	University Programs	External Programs	Total All Programs	University Programs	External Programs	Total All Programs	University Programs	External Programs	Total All Programs
2001-2002	239	50	289	224	125	349	277	96	372
2002-2003	255	43	298	303	103	406	279	73	352
2003-2004	269	64	333	328	148	476	299	106	405
2004-2005	274	41	315	362	87	449	318	64	382
2005-2006	358	46	404	378	91	469	368	69	437

Source: Office of Student Services

**By Year**

Summer	1997	1998	1999	2000	2001	2002	2003	2004	2005	2006
Undergraduate	1,879	1,960	1,969	1,929	1,878	1,881	1,706	1,727	1,685	1,708
Graduate/Professional*	1,886	1,843	1,855	2,031	1,751	1,725	2,037	2,060	2,324	2,170
<b>Total</b>	<b>3,765</b>	<b>3,803</b>	<b>3,824</b>	<b>3,960</b>	<b>3,629</b>	<b>3,606</b>	<b>3,743</b>	<b>3,787</b>	<b>4,009</b>	<b>3,878</b>

\* Includes students registered through the Institute of Religious Education and Pastoral Ministry and the Carroll Graduate School of Management

Source: Office of Student Services

**D****By State**

State	2000	2003	2004	2005	2006	State	2000	2003	2004	2005	2006
Alabama	10	12	12	10	11	Nevada	3	4	9	10	6
Alaska	4	3	4	5	5	New Hampshire	184	166	176	165	171
Arizona	29	39	41	35	33	New Jersey	941	955	1,004	979	954
Arkansas	4	3	3	4	4	New Mexico	12	7	7	8	10
California	380	419	435	427	437	New York	1,372	1,432	1,449	1,450	1,427
Colorado	57	69	65	57	52	North Carolina	26	36	42	44	45
Connecticut	765	699	697	644	648	North Dakota	1	2	4	2	1
Delaware	22	18	16	17	20	Ohio	125	145	134	138	140
Washington, DC	29	24	26	33	29	Oklahoma	13	12	10	7	9
Florida	303	234	251	260	247	Oregon	20	18	23	26	26
Georgia	53	53	49	43	49	Pennsylvania	309	291	307	304	306
Hawaii	34	21	19	20	27	Rhode Island	184	191	188	189	176
Idaho	4	6	4	2	8	South Carolina	5	8	13	12	16
Illinois	248	228	214	213	243	South Dakota	1	1	-	-	1
Indiana	29	28	25	22	18	Tennessee	15	15	15	17	19
Iowa	17	14	9	9	11	Texas	131	146	131	134	125

0 Td002

## By School, 1997-2006

	1997	1998	1999	2000	2001	2002	2003	2004	2005	2006
<b>Arts &amp; Sciences</b>										
Art History	38	36	34	32	45	42	41	60	55	66
Biochemistry	117	97	84	83	82	95	118	125	122	127
Biology	665	543	539	481	443	465	494	581	650	641
Chemistry	84	90	94	84	89	102	98	86	75	97
Classics	24	19	15	11	21	17	26	33	32	37
Communication	542	624	734	865	945	963	925	943	953	945
Computer Science	133	181	202	200	189	139	108	93	68	57
Economics	404	430	402	382	374	398	417	411	445	472
English	931	868	906	863	845	770	758	814	814	770
Film Studies	-	-	-	10	32	46	45	50	51	51
French	39	45	50	56	47	49	46	34	42	43
Geology/Geophysics	73	66	58	52	42	30	29	31	33	39
German	14	8	11	10	3	7	12	16	26	27
History	392	410	431	451	465	530	560	595	627	618
Independent	1	3	2	5	3	1	-	-	-	-
International Studies	67	64	56	45	31	32	35	57	82	78
Italian	7	6	4	5	3	5	2	7	11	8
Mathematics	168	123	148	135	134	194	200	196	190	177
Music	23	26	23	22	29	32	31	36	43	42
Philosophy	158	166	193	211	230	261	252	255	282	270
Physics	18	29	33	36	34	46	50	61	47	62
Romance Languages-Total	120	116	114	110	96	111	115	101	119	120
Political Science	671	618	649	626	646	669	693	796	801	777

---

## By School, 2000-2006\*

	2000	2002	2003	2004	2005	2006
<b>Arts &amp; Sciences</b>						
American Studies	10	22	25	24	17	15
African Studies	9	22	32	36	34	27
Art History	4	11	11	10	17	17
Ancient Civilization	1	12	7	15	14	20
Asian Studies	4	11	14	16	8	4
BioinformaTJ1B 0 7.						

**By Year**

2000		2004		2005		2006	
Communication	865	Communication	943	Communications	953	Communications	945
English	863	English	814	English	814	Finance	805
Finance	732	Political Science	796	Political Science	801	Political Science	777
Psychology	684	Finance	763	Finance	760	English	770
Political Science	626	History	595	Biology	650	Biology	641
Economics	510	Biology	581	History	627	History	618
Biology	481	Economics	539	Economics	569	Economics	610
History	451	Psychology	428	Psychology	425	Psychology	450
Marketing	427	Marketing	392	Marketing	396	Marketing	386
Human Development	277	Nursing	329	Nursing	358	Nursing	377

Source: Office of Student Services

Note: Data for Economics majors adjusted to reflect enrollments in both A&amp;S and CSOM; March 7, 2007

**Disciplines\* with Largest Increases in Undergraduate Majors, 1996-2006**

	1996	2006	% Change
History	379	618	63%
Art History	37	66	78%
Classics	20	37	85%
Physics	33	62	88%
Communication	499	945	89%
International Studies	40	78	95%
Music	19	42	121%
Theology	47	113	140%
Slavic & Eastern Languages	12	34	183%

\* Among those with at least ten or more students

**By Year**

2000		2004		2005		2006	
Hispanic Studies	82	History	178	International Studies	136	History	159
Environmental Studies	68	International Studies	124	History	132	International Studies	157
History	65	Hispanic Studies	82	Hispanic Studies	99	Hispanic Studies	99
Economics	45	Faith, Peace, and Justice	78	Philosophy	75	Philosophy	75
General Education	41	Philosophy	68	French	65	Mathematics	70
Computer Science	33	French	67	Environmental Studies	63	French	66
Faith, Peace, and Justice	33	Film Studies	58	Mathematics	63	Music	65
Organizational Studies	31	Chemistry	56	Faith, Peace, and Justice	50	Environmental Studies	64
International Studies	28	Studio Art	53	Film Studies	48	Economics	50
French	28	Environmental Studies	52	Economics	46	Studio Art	45
Secondary Education	28						
Special Education	28						

\* Does not include Pre-Dental, Pre-Law, or Pre-Medical programs of study

Source: Office of Student Services

---

&

**By School, 2006-2007\***

Arts & Sciences	95
Education	11
Management	89
Nursing	2
College of Advancing Studies	14
Exchange Students - Undergraduate	85
Boston College Experience Program	9
<b>Total Undergraduate</b>	<b>305</b>

Graduate Arts & Sciences	219
Graduate Education	81
Graduate Management	134
Graduate Nursing	3
Graduate Social Work	11
Law	14
Graduate Advancing Studies	7
Graduate Exchange Students	2
<b>Total Graduate/Professional</b>	<b>471</b>
<b>Total Enrolled Students</b>	<b>776</b>
Practical Training**	131
Faculty and Research Scholars	76
<b>Total</b>	<b>983</b>

\* These figures do not include all students, faculty, and scholars who will arrive in spring 2007 which would add approximately 30-40 to the total international population for 2006-2007

\*\* Students who have graduated from Boston College and who are undertaking a period of practical training in the United States  
Source: Office of the Dean for Student Development

---

&

**By Class or Program, 2006-2007\***

Freshmen	53
Sophomores	54
Juniors	49
Seniors	45
Undergraduate Exchange Students	85
Visiting Student	10
Boston College Experience Program	9
<b>Total Undergraduate</b>	<b>305</b>

Graduate/Professional	
M.A.	53
M.S.T.	1
M.B.A.	51
M.Ed.	23
M.S.	68
M.S.W.	9
C.A.E.S.	2
Ph.D.	248
J.D.	14
Graduate Exchange Students	2
<b>Total Graduate/Professional</b>	<b>471</b>

Practical Training**	131
Faculty and Research Scholars	76
<b>Total</b>	<b>983</b>

\* These figures do not include all students, faculty, and scholars who will arrive in spring 2007 which would add approximately 30-40 to the total international population for 2006-2007

\*\* Students who have graduated from Boston College and who are undertaking a period of practical training in the United States  
Source: Office of the Dean for Student Development

---

&

**By Gender and Program, 2006-2007**

---







## D

### \* By Degree and Number of Majors

	2001-2002	2002-2003	2003-2004	2004-2005	2005-2006
<b>College of Arts &amp; Sciences</b>					
<b>A.B.</b>					
Single Major	1032	1117	964	991	923
Double Major	192	220	213	294	267
Triple Major	4	1	1	1	2
Total A.B. Degrees	<u>1,228</u>	<u>1,338</u>	<u>1,178</u>	<u>1,286</u>	<u>1,192</u>
<b>B.S.</b>					
Single Major	142	125	134	144	167
Double Major	15	9	23	20	21
Triple Major	-	-	-	1	-
Total B.S. Degrees	<u>157</u>	<u>134</u>	<u>157</u>	<u>165</u>	<u>188</u>
Total College of Arts & Sciences	<u>1,385</u>	<u>1,472</u>	<u>1,335</u>	<u>1,451</u>	<u>1,380</u>
<b>Lynch School of Education - A.B.</b>					
Single Major	41	40	40	50	43
Double Major	157	144	154	145	141
Triple Major	-	-	1	2	1
Total Lynch School of Education	<u>198</u>	<u>184</u>	<u>195</u>	<u>197</u>	<u>185</u>
<b>Carroll School of Management - B.S.</b>					
Single Major	346	312	299	306	250
Double Major	221	205	248	219	222
Triple Major	-	9	8	8	13
Total Carroll School of Management	<u>567</u>	<u>526</u>	<u>555</u>	<u>533</u>	<u>485</u>
<b>Connell School of Nursing</b>					
Single Major	63	42	46	60	80
Double Major	1	1	-	-	-
Total Connell School of Nursing	<u>64</u>	<u>43</u>	<u>46</u>	<u>60</u>	<u>80</u>
Subtotal-Undergraduate Day Degrees Conferred	<u>2,214</u>	<u>2,225</u>	<u>2,131</u>	<u>2,241</u>	<u>2,130</u>
<b>Woods College of Advancing Studies - A.B.</b>					
Single Major	97	86	88	98	97
Double Major	-	2	4	2	2
Triple Major	-	-	-	-	-
Total Woods College of Advancing Studies	<u>97</u>	<u>88</u>	<u>92</u>	<u>100</u>	<u>99</u>
<b>Total Undergraduate Degrees Conferred</b>	<b><u>2,311</u></b>	<b><u>2,313</u></b>	<b><u>2,223</u></b>	<b><u>2,341</u></b>	<b><u>2,229</u></b>

\* August, December, and May graduations combined  
Source: Office of Student Services

---

**D****By Major\***

	<b>2001-2002</b>	<b>2002-2003</b>	<b>2003-2004</b>	<b>2004-2005</b>	<b>2005-2006</b>
Accounting	66	89	99	100	93
Accounting/Information Technology	-	1	3	1	-
Art History	10	14	15	14	10

## D

### By School and Major\*

	2003-2004						2004-2005						2005-2006					
	A&S		Ed	Mgt	Nurs	Total	A&S		Ed	Mgt	Nurs	Total	A&S		Ed	Mgt	Nurs	Total
	AB	BS	AB	BS	BS		AB	BS	AB	BS	BS		AB	BS	AB	BS	BS	
Accounting	-	-	-	99	-	99	-	-	-	100	-	100	-	-	-	93	-	93
Accounting/Information Tech	-	-	-	3	-	3	-	-	-	1	-	1	-	-	-	-	-	-
Art History	15	-	-	-	-	15	14	-	-	-	-	14	10	-	-	-	-	10
Biochemistry	-	17	-	-	-	17	-	29	-	-	-	29	-	23	-	-	-	23
Biology	9	85	-	-	-	94	12	94	-	-	-	106	19	125	-	-	-	144
Chemistry	-	26	-	-	-	26	-	19	-	-	-	19	-	15	-	-	-	15
Child in Society	-	-	1	-	-	1	-	-	2	-	-	2	-	-	-	-	-	-
Classics	2	-	-	-	-	2	4	-	-	-	-	4	4	-	-	-	-	4
Communication	192	-	-	-	-	192	248	-	-	-	-	248	205	-	-	-	-	205
Computer Science	27	7	-	14	-	48	16	10	-	-	-	26	12	9	-	3	-	24
Corporate Reporting & Analysis	-	-	-	1	-	1	-	-	-	5	-	5	-	-	-	-	-	-
Early Childhood Education	-	-	9	-	-	9	-	-	13	-	-	13	-	-	4	-	-	4
Economics	117	-	-	28	-	145	103	-	-	27	-	130	115	-	-	17	-	132
Elementary Education	-	-	78	-	-	78	-	-	69	-	-	69	-	-	72	-	-	72
English	199	-	-	-	-	199	182	-	-	-	-	182	181	-	2	-	-	183
Environmental Geosciences	-	7	-	-	-	7	-	7	-	-	-	7	-	6	-	-	-	6
Film Studies	7	-	-	-	-	7	9	-	-	-	-	9	7	-	-	-	-	7
Finance	-	-	-	221	-	221	-	-	-	234	-	234	-	-	-	233	-	233
French	9	-	-	-	-	9	10	-	-	-	-	10	4	-	-	-	-	4
Geology	-	-	-	-	-	-	-	-	-	-	-	-	-	2	-	-	-	2
Geophysics	-	-	-	-	-	-	-	-	-	-	-	-	-	-	-	-	-	-
Geology/Geophysics	-	2	-	-	-	2	-	-	-	-	-	-	-	-	-	-	-	-
German	-	-	-	-	-	-	2	-	-	-	-	2	1	-	-	-	-	1
Hispanic Studies	7	-	-	-	-	7	10	-	-	-	-	10	10	-	-	-	-	10
History	143	-	-	-	-	143	145	-	-	-	-	145	158	-	6	-	-	164
Human Development	-	-	81	-	-	81	-	-	86	-	-	86	-	-	80	-	-	80
Independent	-	-	-	-	-	-	-	-	-	-	-	-	-	-	-	-	-	-
Information Systems	-	-	-	18	-	18	-	-	-	15	-	15	-	-	-	8	-	8
International Studies	12	-	-	-	-	12	19	-	-	-	-	19	30	-	-	-	-	30
Italian	1	-	-	-	-	1	-	-	-	-	-	-	1	-	-	-	-	1
Linguistics	-	-	-	-	-	-	3	-	-	-	-	3	-	-	-	-	-	-
Management	-	-	-	15	-	15	-	-	-	13	-	13	-	-	-	9	-	9
Marketing	-	-	-	135	-	135	-	-	-	126	-	126	-	-	-	111	-	111
Mathematics	28	-	-	-	-	28	44	-	-	-	-	44	36	-	-	-	-	36
Mathematics/Computer Science	-	-	-	-	-	-	-	-	1	-	-	1	-	-	-	-	-	-
Music	4	-	-	-	-	4	3	-	-	-	-	3	7	-	-	-	-	7
Nursing	-	-	-	-	46	46	-	-	-	-	60	60	-	-	-	-	80	80
Operations Management	-	-	-	15	-	15	-	-	-	6	-	6	-	-	-	4	-	4
Organizational Studies/Human Resource Management	-	-	-	6	-	6	-	-	-	6	-	6	-	-	-	7	-	7
Philosophy	49	-	-	-	-	49	56	-	-	-	-	56	44	-	-	-	-	44
Physics	-	13	-	-	-	13	-	6	-	-	-	6	-	8	-	-	-	8
Political Science	121	-	-	-	-	121	146	-	-	-	-	146	142	-	-	-	-	142
Psychology	133	-	-	-	-	133	125	-	-	-	-	125	109	-	-	-	-	109
Russian	1	-	-	-	-	1	-	-	-	-	-	-	-	-	-	-	-	-
Secondary Education	-	-	26	-	-	26	-	-	26	-	-	26	-	-	21	-	-	21
Slavic Studies	-	-	-	-	-	-	1	-	-	-	-	1	-	-	-	-	-	-
Sociology	61	-	-	-	-	61	68	-	-	-	-	68	53	-	-	-	-	53
Studio Art	4	-	-	-	-	4	14	-	-	-	-	14	4	-	-	-	-	4
Theatre	10	-	-	-	-	10	21	-	-	-	-	21	20	-	-	-	-	20
Theology	27	-	-	-	-	27	31	-	-	-	-	31	20	-	-	-	-	20
<b>Total**</b>	<b>1,178</b>	<b>157</b>	<b>195</b>	<b>555</b>	<b>46</b>	<b>2,131</b>	<b>1,286</b>	<b>165</b>	<b>197</b>	<b>533</b>	<b>60</b>	<b>2,241</b>	<b>1,192</b>	<b>188</b>	<b>185</b>	<b>485</b>	<b>80</b>	<b>2,130</b>

\* Double and triple majors counted by first major



, 2001-2006

**Dollars Awarded**

	2001	2002	2003	2004	2005	2006
<b>Undergraduates (All) Receiving:</b>						
Need-Based Financial Aid	42%	37%	38%	42%	40%	40%
Financial Assistance of All Types*	71%	71%	70%	71%	70%	69%
Average Need-Based Scholarship and/or Grant	\$13,275	\$16,239	\$16,820	\$17,698	\$18,342	\$19,854
Average Need-Based Financial Aid Package**	\$18,830	\$22,879	\$22,859	\$23,215	\$27,292	\$24,905
<b>Undergraduate Scholarships and Grants:</b>						
University	\$49,745,196	\$53,350,054	\$55,242,758	\$62,096,910	\$66,198,613	\$69,725,574
Federal	\$3,840,815	\$4,235,202	\$4,174,670	\$4,221,850	\$4,355,236	\$3,959,266
State	\$2,038,684	\$2,121,486	\$1,839,217	\$1,583,459	\$1,589,085	\$1,538,125

---

**Freshman Matriculants**


---

	<b>Transfer Rate (transfer out in good standing)</b>	<b>Graduation Rate (150% of normal time)</b>	<b>Overall Retention Rate</b>
<b>Fall 1999</b>	5%	91%	96%
<b>Fall 1998</b>	4%	89%	93%
<b>Fall 1997</b>	4%	89%	93%
<b>Fall 1996</b>	5%	87%	92%
<b>Fall 1995</b>	4%	87%	91%

\* "Retention Rate" is the "graduation rate" plus the "transfer out rate" of students to another college and is based on the national standard of six years after matriculation  
Source: Office of Institutional Research

---

**Received by Undergraduates**


---

<b>Award</b>	<b>Total Number Received</b>
J. William Fulbright Grant (Undergraduate) .....	96
Freeman/ASIA Scholarship.....	22
National Security Education Program Fellowship .....	17
Barry M. Goldwater Scholarship.....	14
Beckman Scholarship.....	13
Harry S. Truman Scholarship.....	10
Rotary International Ambassadorial Scholarship .....	6
Andrew Mellon Scholarship.....	5
National Science Foundation Graduate Research Fellowship .....	5
Beinecke Memorial Scholarship .....	4
George C. Marshall Scholarship.....	3
Institute for International Public Policy Fellowship .....	3
The Rhodes Scholarship .....	2
Thomas Pickering Scholarship .....	2
Gates-Cambridge Scholarship.....	2
James Madison Scholarship.....	2





& D

## D

2006-2007

Kenneth D. Pierce '79  
**President**

Thomas F. Flannery '81  
**Treasurer**

Dineen A. Riviezzo '89  
**Secretary**

John S. Buckley '66  
**Chair, Council of Past Presidents**

William C. McInnes, S. J. '44, GA&S '51  
**Chaplain**

Diolinda B. Abilheira '62  
**Director**

Robert E. Burke '69, M.A. '70  
**Director**

Kathleen M. Comerford '82  
**Director**

Claudia de la Cruz '85  
**Director**

Jeremiah T. Doyle '87  
**Director**

Fran Dubrowski NC '70  
**Director**

Douglas R. Flutie '85  
**Director**

Gerald B. Healy '63  
**Director**

Lisa Millora '99, LGSOE '01  
**Director**

Kimberly A. O'Neil '97  
**Director**

Susan Budassi Sheehy '69  
**Director**

Richard P. Quinlan '80, LAW '84  
**Director**

Vincent J. Quealy, Jr. '75  
**Director**

Delores T. Wesley '83  
**Director**

Data as of November 2006  
Source Alumni Association

## Regional Chapters

<b>Arizona</b> Phoenix	<b>Georgia</b> Atlanta	<b>North Carolina</b> Charlotte Triangle
<b>California</b> Los Angeles Northern CA Orange County San Diego	<b>Illinois</b> Chicago	<b>Ohio</b> Cleveland
<b>Colorado</b> Denver	<b>Indiana</b> Indianapolis	<b>Pennsylvania</b> Philadelphia Western PA
<b>Connecticut</b> Fairfield County Hartford	<b>Maine</b> Baltimore	<b>Rhode Island</b>
<b>District of Columbia</b> Washington	<b>Maryland</b> Boston	<b>South Carolina</b>
<b>Florida</b> Central Miami Palm Beach Sarasota Southwest Tampa Bay	<b>Massachusetts</b> Cape Cod Western MA	<b>Texas</b> Dallas
	<b>Minnesota</b> St. Louis	<b>Tennessee</b> Nashville
	<b>Missouri</b> St. Louis	<b>Virginia</b>
	<b>New Hampshire</b>	<b>Washington</b> Seattle
	<b>New Jersey</b>	<b>Wisconsin</b>
	<b>New York</b> New York City Northeastern NY Westchester County	<b>Great Britain</b> Greece

Source: Alumni Association

## 2006 Achievement Awards

**The William V. McKenney Award**  
Robert C. Reardon '63, MS '66

**Awards of Excellence**

**Arts & Humanities**  
Kathleen Hickey Barrie NC '72

**Commerce**  
John H. Griffin, Jr. '82

**Education**  
Kenneth K. Quigley, Jr. '79

**Health**  
Rev. Edward J. Phillips, MM '68

**Law**  
Joan Lukey JD '74

**Public Service**  
Mark L. O'Connell MSW '68

**Religion**  
Maryanne Patricia Confoy, RSC Ph.D. '81

**Science**  
Walter J. Arabasz '64

**Young Alumni Achievement Award**  
William J. Driscoll, Jr. '05

**D**

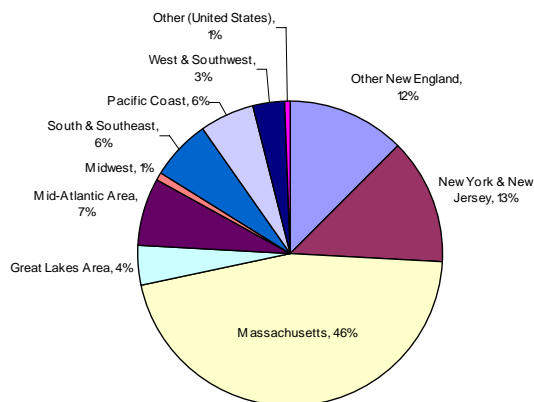
**Fall 2006**

Alabama	164	Montana	94
Alaska	99	Nebraska	139
American Samoa	1	Nevada	191
Arizona	765	New Hampshire	3,749
Arkansas	54	New Jersey	6,196
Armed Forces - California	23	New Mexico	232
Armed Forces - Florida	11	New York	12,026
Armed Forces - New York	61	North Carolina	1,286
California	6,686	North Dakota	20
Colorado	1,032	Northern Mariana Islands	1
Connecticut	7,407	Ohio	1,391
Delaware	229	Oklahoma	104
District of Columbia	1,009	Oregon	438
Florida	4,558	Pennsylvania	3,173
Georgia	1,244	Puerto Rico	419
Guam	16	Rhode Island	2,861
Hawaii	294	South Carolina	398
Idaho	74	South Dakota	30
Illinois	2,434	Tennessee	296
Indiana	324	Texas	1,671
Iowa	128	Utah	131
Kansas	169	Vermont	787
Kentucky	205	Virgin Islands	38
Louisiana	255	Virginia	2,797
Maine	2,099	Washington	919
Maryland	2,579	West Virginia	69
Massachusetts	62,575	Wisconsin	517
Michigan	837	Wyoming	41
Minnesota	687	<b>Total U.S.</b>	<b>136,600</b>
Mississippi	47	Foreign Nations	2,639
Missouri	520	Other	6,863
		<b>Total Alumni</b>	<b>146,102</b>

**Summary**

<b>Total Massachusetts</b>	<b>62,575</b>
<b>Other New England States</b>	
Connecticut	7,407
Maine	2,099
New Hampshire	3,749
Rhode Island	2,861
Vermont	787
<b>Total Other New England States</b>	<b>16,903</b>
<b>Total New England</b>	<b>79,478</b>
<b>Total Outside New England</b>	<b>66,624</b>
<b>Total Alumni</b>	<b>146,102</b>

Data as of September 2006  
Source: Information Services, University Relations



**Great Lakes Area:** IL, MI, MN, OH, WI

**Mid-Atlantic Area:** DE, DC, MD, PA, VA, WV

**Midwest:** IA, IN, KS, MO, NE

**Other New England:** CT, ME, NH, RI, VT

**South & Southeast:** AL, AR, FL, GA, KY, LA, MS, NC, SC, TN

**Pacific Coast:** CA, OR, WA

**West & Southwest:**

## By Primary School and Class, Fall 2006

Class	A&S	Ed.	Mgt.	Nursing	Adv. Stds.*	Newton College	Grad. A&S	Grad. Mgt.	Grad. Ed.**	Grad. Nurs.**	Grad. Adv. Stds.	Social Work	Weston Law	Weston Theo.	Hon. Deg.	EX*** Alum.	Total
1920	1	-	-	-	-	-	-	-	-	-	-	-	-	-	-	-	1
1923	-	-	-	-	-	-	-	-	-	-	-	-	-	-	-	2	2
1925	1	-	-	-	-	-	-	-	-	-	-	-	-	-	-	-	1
1926	-	-	-	-	-	-	-	-	-	-	-	-	1	-	-	-	1
1927	1	-	-	-	-	-	3	-	-	-	-	-	3	-	-	-	7
1928	1	-	-	-	-	-	-	-	-	-	-	-	1	-	-	1	3
1929	3	-	-	-	-	-	-	-	-	-	-	-	-	-	-	1	4
1930	2	-	-	-	-	-	3	-	-	-	-	-	-	-	-	2	7
1931	3	-	-	-	1	-	1	-	-	-	-	-	-	-	-	4	9
1932	6	-	-	-	1	-	-	-	2	-	-	-	-	-	-	7	16
1933	13	-	-	-	1	-	3	-	1	-	-	-	1	-	-	2	21
1934	17	-	-	-	4	-	4	-	-	-	-	-	1	-	-	7	33
1935	16	-	-	-	6	-	7	-	2	-	-	-	5	2	-	7	45
1936	26	-	-	-	7	-	4	-	1	-	-	-	-	1	1	2	42
1937	40	-	-	-	6	-	3	-	-	-	-	-	7	1	1	6	64
1938	35	-	-	-	9	-	3	-	1	-	-	3	3	-	-	6	60
1939	56	-	-	-	7	-	7	-	1	-	-	2	4	1	-	16	94
1940	67	-	-	-	4	-	5	-	-	-	-	3	2	-	-	7	88
1941	58	-	-	-	12	-	4	-	1	1	-	4	2	-	-	5	87
1942	77	-	12	-	7	-	7	-	2	-	-	5	1	1	-	13	125
1943	83	-	20	-	11	-	3	-	-	-	-	4	6	-	-	17	144
1944	62	-	23	-	3	-	2	-	-	-	-	3	3	1	-	21	118
1945	57	-	13	-	7	-	1	-	1	-	-	2	1	1	-	75	158
1946	10	-	-	-	12	-	7	-	2	-	-	7	5	-	-	21	64
1947	59	-	10	-	7	-	9	-	5	-	-	14	6	2	-	24	136
1948	83	-	38	-	10	-	12	-	2	-	-	14	12	2	-	2	175
1949	224	-	53	14	23	-	20	-	1	-	-	15	24	2	-	7	383
1950	504	-	163	18	13	22	27	-	6	-	-	18	38	6	-	19	834
1951	498	-	216	25	32	23	33	-	13	-	-	15	48	3	1	26	933
1952	332	-	211	49	29	26	28	-	8	-	-	16	45	1	-	22	767
1953	292	-	184	55	35	33	40	-	25	-	-	23	34	1	5	24	751
1954	247	-	175	80	36	19	53	-	33	-	-	23	36	1	4	59	766
1955	220	-	162	101	51	35	51	-	31	-	-	18	30	4	2	20	725
1956	258	119	223	89	54	34	55	-	25	-	-	21	40	6	4	49	977
1957	265	86	208	97	45	45	46	-	29	-	-	20	41	4	2	49	937
1958	313	118	273	142	49	52	55	-	45	1	-	14	40	3	5	81	1,191
1959	317	104	280	126	56	70	49	-	31	5	-	22	53	11	1	73	1,198
1960	280	116	301	176	103	92	59	1	88	5	-	24	48	16	3	24	1,336
1961	248	77	253	139	55	93	73	6	42	11	-	29	63	30	2	25	1,146
1962	295	119	222	162	74	118	42	17	33	4	-	33	77	21	4	39	1,260
1963	437	160	299	148	52	134	120	26	84	13	-	25	65	24	2	31	1,620
1964	442	170	317	121	63	179	105	19	66	13	-	41	70	27	4	46	1,683
1965	404	173	329	138	68	129	111	28	88	6	-	44	95	35	2	47	1,697

## By Primary School and Class, Fall 2006 (Continued)

Class	A&S	Ed.	Mgt.	Nursing	Adv. Newton		Grad. A&S	Grad. Mgt.	Grad. Ed.**	Grad. Nurs.**	Grad. Adv. Stds.	Social Work	Weston		Hon. Deg.	EX***	Total
					Stds.*	College							Law	Theo.			
1966	419	168	321	195	58	153	121	32	103	6	-	45	104	31	5	38	1,799
1967	440	188	358	168	65	142	234	46	128	13	-	52	86	27	2	41	1,990
1968	525	272	393	136	52	181	156	45	158	17	-	46	109	27	4	41	2,162
1969	513	233	381	111	75	182	232	32	217	24	-	46	130	32	2	53	2,263
1970	509	220	344	138	81	198	204	92	219	21	-	51	108	1	5	39	2,230
1971	507	272	370	156	59	172	201	69	252	29	-	83	136	-	3	44	2,353
1972	605	279	381	133	67	235	253	57	261	17	-	82	167	19	2	51	2,609
1973	600	247	312	151	67	232	216	58	238	27	-	76	190	-	2	35	2,451
1974	939	318	374	151	75	201	187	60	155	49	-	90	199	-	4	37	2,839
1975	893	289	318	202	94	207	220	68	246	51	-	102	170	-	5	11	2,876
1976	1,127	354	485	218	74	5	234	74	271	42	-	97	200	-	3	8	3,192
1977	1,013	291	446	161	68	-	184	67	175	49	-	99	215	-	3	9	2,780
1978	1,207	251	454	167	90	-	192	76	206	67	-	87	190	-	1	2	2,990
1979	1,097	217	499	197	100	-	155	107	218	57	-	108	215	-	3	8	2,981
1980	1,174	171	468	202	90	-	158	115	229	79	-	115	222	-	2	5	3,030
1981	1,165	206	561	170	90	-	165	122	244	73	-	87	231	-	2	8	3,124
1982	1,235	193	555	175	103	-	151	119	254	101	-	89	207	-	2	8	3,192
1983	1,256	168	561	184	130	-	133	113	195	73	-	130	223	-	3	2	3,171
1984	1,362	143	536	140	123	-	133	123	178	40	-	113	232	-	2	10	3,135
1985	1,150	140	573	140	132	-	152	132	204	53	1	92	254	-	5	6	3,034
1986	1,251	151	582	149	126	-	155	134	210	48	-	124	219	-	6	3	3,158
1987	1,297	141	571	139	125	-	185	122	174	57	-	116	242	-	-	4	3,173
1988	1,296	160	542	123	94	-	166	184	214	73	-	114	231	-	4	3	3,204
1989	1,408	181	538	89	108	-	144	180	230	64	-	118	219	-	2	9	3,290
1990	1,383	167	508	87	137	-	181	189	259	66	-	102	209	-	6	6	3,300
1991	1,341	153	582	77	168	-	171	222	256	50	-	111	267	-	2	4	3,404
1992	1,529	192	593	79	187	-	256	268	245	59	-	126	232	-	2	6	3,774
1993	1,301	186	499	108	146	-	226	244	280	51	-	158	267	-	1	2	3,469
1994	1,257	192	525	96	146	-	225	208	349	45	-	159	253	-	4	5	3,464
1995	1,412	188	601	89	126	-	148	195	240	54	-	185	253	-	3	2	3,496
1996	1,303	275	553	122	115	-	214	293	208	50	-	169	237	-	4	3	3,546
1997	1,368	160	632	78	140	-	189	174	326	55	-	207	243	-	2	3	3,577
1998	1,379	204	576	81	131	-	164	270	296	36	14	205	244	-	4	2	3,606
1999	1,212	182	566	50	99	-	174	289	300	32	39	187	231	-	5	5	3,371
2000	1,379	223	642	67	109	-	169	290	308	48	47	164	249	-	4	10	3,709
2001	1,392	202	569	45	102	-	152	258	306	46	34	165	222	-	3	5	3,501
2002	1,348	194	565	62	92	-	176	327	253	39	23	143	238	-	3	5	3,468
2003	1,476	182	522	42	88	-	166	324	277	41	39	134	238	-	-	10	3,539
2004	1,322	191	533	47	117	-	146	298	317	51	38	157	248	-	1	24	3,490
2005	1,407	184	530	59	56	-	98	307	127	30	35	171	223	-	-	-	3,227
2006	1,320	121	452	77	103	-	155	366	284	66	38	175	265	-	3	1	3,426
<b>Total</b>	<b>52,470</b>	<b>9,691</b>	<b>24,356</b>	<b>6,741</b>	<b>5,161</b>	<b>3,012</b>	<b>8,396</b>	<b>6,846</b>	<b>10,279</b>	<b>2,008</b>	<b>308</b>	<b>5,342</b>	<b>9,523</b>	<b>350</b>	<b>162</b>	<b>1,457</b>	<b>146,102</b>

\* Formerly known as the Evening College

\*\* Prior to June 1994, graduate degrees in Education and Nursing were granted by the Graduate School of Arts &amp; Sciences

\*\*\* EX Alumni are individuals who attended Boston College without graduating

Note: Alumni who received more than one degree from Boston College are counted by their primary (or first received) degree only

Data as of September 2006

Source: Information Services, University Relations

---

 By Gender and Class, Fall 2006

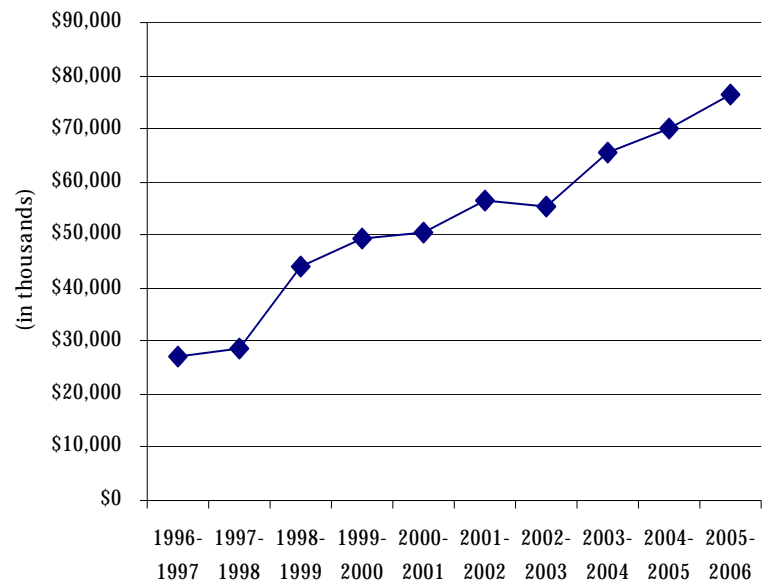
Class	Women	Men	Total	Class	Women	Men	Total
1920	-	1	1	1965	568	1,129	1,697
1923	-	2	2	1966	682	1,117	1,799
1925	-	1	1	1967	729	1,261	1,990
1926	-	1	1	1968	784	1,378	2,162
1927	3	4	7	1969	849	1,414	2,263
1928	-	3	3	1970	907	1,323	2,230
1929	-	4	4	1971	963	1,390	2,353
1930	3	4	7	1972	1,064	1,545	2,609
1931	3	6	9	1973	1,064	1,387	2,451
1932	2	14	16	1974	1,333	1,506	2,839
1933	4	17	21	1975	1,551	1,325	2,876
1934	7	26	33	1976	1,651	1,541	3,192
1935	14	31	45	1977	1,518	1,262	2,780
1936	10	32	42	1978	1,530	1,460	2,990
1937	5	59	64	1979	1,643	1,338	2,981
1938	12	48	60	1980	1,686	1,344	3,030
1939	13	81	94	1981	1,744	1,380	3,124
1940	10	78	88	1982	1,851	1,341	3,192
1941	14	73	87	1983	1,937	1,234	3,171
1942	11	114	125	1984	1,813	1,322	3,135
1943	13	131	144	1985	1,814	1,220	3,034
1944	8	110	118	1986	1,859	1,299	3,158
1945	11	147	158	1987	1,932	1,241	3,173
1946	20	44	64	1988	1,879	1,325	3,204
1947	27	109	136	1989	1,955	1,335	3,290
1948	25	150	175	1990	1,898	1,402	3,300
1949	56	327	383	1991	1,958	1,446	3,404
1950	82	752	834	1992	2,098	1,676	3,774
1951	105	828	933	1993	2,023	1,446	3,469
1952	118	649	767	1994	1,935	1,529	3,464
1953	160	591	751	1995	1,991	1,505	3,496
1954	184	582	766	1996	1,932	1,614	3,546
1955	217	508	725	1997	1,979	1,598	3,577
1956	307	670	977	1998	2,045	1,561	3,606
1957	269	668	937	1999	1,895	1,476	3,371
1958	386	805	1,191	2000	2,082	1,627	3,709
1959	354	844	1,198	2001	1,939	1,562	3,501
1960	503	833	1,336	2002	1,903	1,565	3,468
1961	406	740	1,146	2003	1,943	1,596	3,539
1962	482	778	1,260	2004	1,930	1,560	3,490
1963	595	1,025	1,620	2005	1,809	1,418	3,227
1964	618	1,065	1,683	2006	1,897	1,529	3,426
				<b>Total</b>	<b>73,620</b>	<b>72,482</b>	<b>146,102</b>

**Total Private Gift Support**

Source	2001-02	2002-03	2003-04	2004-05	2005-06
Alumni	\$29,222,612	\$31,147,060	\$35,694,098	\$38,135,630	\$39,576,493
Parents	\$11,046,981	\$8,011,022	\$9,172,496	\$8,306,400	\$7,655,813
Friends	\$2,685,530	\$3,893,493	\$2,562,671	\$5,338,523	\$5,030,062
Corporations	\$4,805,765	\$5,808,748	\$7,650,284	\$5,331,752	\$6,225,582
Matching Gifts	\$1,657,407	\$1,583,587	\$1,659,672	\$1,986,236	\$1,643,011
Foundations	\$5,778,952	\$4,035,535	\$8,005,241	\$9,673,922	\$15,246,686
Associations	\$1,429,344	\$810,845	\$627,329	\$1,288,076	\$1,032,250
<b>Total Gifts</b>	<b>\$56,626,591</b>	<b>\$55,290,290</b>	<b>\$65,371,792</b>	<b>\$70,060,540</b>	<b>\$76,409,897</b>

\* Gifts represent cash received during the fiscal year, which runs from June 1 to May 31  
 Data as of June 2006  
 Source: Information Services, University Relations

7 06



**By Giving Club**

Giving Club	Level of Gift	2001-2002**	2002-2003**	2003-2004**	2004-2005**	2005-2006**
Gasson Society	\$10,000+	626	652	690	719	1,126
President's Circle	\$5,000-\$9,999	500	515	548	534	727
FIDES Patron	\$2,500-\$4,999	548	621	691	770	1,079
FIDES	\$1,000-\$2,499	2,408	2,344	2,521	2,486	3,025
Tower Builders	\$500-\$999	1,507	1,897	1,423	1,737	2,201
John Bapst Associates	\$250-\$499	3,086	3,071	3,205	2,972	3,732
McElroy Associates	\$100-\$249	8,361	8,961	9,662	9,241	

**D**

**By Primary School and Class, 2005-2006**

Class	A&S	Ed.	Mgt.	Nursing	Std.*	College	A&S	Mgt.	Ed.**	Nurs.**	Adv.	Std.	Social	Weston	Hon.	EX***
-------	-----	-----	------	---------	-------	---------	-----	------	-------	---------	------	------	--------	--------	------	-------



**D**  
**By Primary School and Class, 2005-2006 (Continued)**

Class	A&S	Ed.	Mgt.	Nursing	Std.*	Adv. College	Newton	Grad. A&S	Grad. Mgt.	Grad. Ed.**	Grad. Nurs.**	Grad. Adv. Stds.	Social Work	Law	Weston Theo.	Hon. Degrees	EX*** Alumni	Total
1970	135	57	77	38	15	51	29	13	25	4	-	10	32	1	-	1	488	





---

**Location and Primary Use, Spring 2006**

<b>Name</b>	<b>Location</b>	<b>Primary Use</b>	<b>Date Constructed or Acquired</b>	<b>Gross Square Footage<sup>1</sup></b>
Alumni House.....	885 Centre St.....	Administrative .....	1974.....	15,638
Alumni Stadium .....	2604 Beacon St.....	Sports .....	1957.....	447,300
Bapst Library.....	Middle Campus .....	Library .....	1928.....	69,623
Barat House .....	885 Centre St.....	Administrative .....	1974.....	25,392
Bea House <sup>2</sup> .....	2			

### Location and Primary Use, Spring 2006 (Continued)

Name	Location	Primary Use	Date Constructed or Acquired	Gross Square Footage <sup>1</sup>
Hopkins House .....	116 College Rd.....	Administrative .....	1968.....	4,274
Hovey House.....	258 Hammond St .....	Academic & Administrative .....	1971.....	11,148
Ignacio Hall .....	100 Commonwealth Ave.....	Student Res/Administrative.....	1973.....	121,542
Kenny-Cottle Library.....	885 Centre St.....	Library .....	1974.....	53,014
Keyes North/South.....	885 Centre St.....	Student Residence.....	1974.....	65,266
Kostka Hall .....	149 Hammond St .....	Student Residence.....	1957.....	30,704
Law East Wing.....	885 Centre St.....	Academic.....	1999.....	49,109
Law Library .....	885 Centre St.....	Library .....	1996.....	83,017
Lawrence House .....	122 College Rd.....	Administrative .....	1968.....	3,681
Loyola Hall .....	42 Tudor Rd.....	Student Residence.....	1955.....	23,348
Lyons Hall.....	Middle Campus .....	Academic & Administrative .....	1951.....	84,111
Manresa House & Garage <sup>3</sup> .....	188 Beacon St .....	Academic.....	1989.....	5,774
Mary House .....	885 Centre St.....	Academic & Administrative .....	1974.....	4,326
McElroy Commons.....	Middle Campus .....	Student Services & Admin .....	01/06/1995.....	4,000

JTJ7.5714[(1955)-6  
Mary Hous19.70

### Location and Primary Use, Spring 2006 (Continued)

Name	Location	Primary Use	Date Constructed or Acquired	Gross Square Footage <sup>1</sup>
Welch Hall	182 Hammond St	Student Residence	1965	40,724
Weston Observatory	Weston, MA	Research & Administrative	1948	21,696
Williams Hall	144 Hammond St	Student Residence	1965	40,738
Xavier Hall	44 Tudor Rd	Student Residence	1955	16,706
Yawkey Athletics Center	2597 Beacon Street	Sports	2004	73,927
---	2 Boston Rd Property	TBD	2000	16,591
---	4 Quincy Rd	Residence	2002	4,801
---	11 Chestnut Hill Rd & Garage	Residence	2000	5,334
---	14 Mayflower Rd & Garage	Administrative	1998	5,245
---	18 Wade St & Garage	Residence	2006	6,349
---	19 Mayflower Rd & Garage	Residence	2004	4,442
---	21 Campanella Way	Academic & Administrative	2002	154,506
---	22 Stone Ave & Garage	Administrative	1999	4,758
---	24 Mayflower Rd & Garage	Residence	2004	4,461
---	24 Quincy Rd	Academic	1998	4,317
---	24 Wade St & Garage	Residence	2006	5,523
---	25 Lawrence Ave & Garage	Administrative	1993	5,180
---	30 Old Colony Rd	Residence	2005	5,158
---	30 Quincy Rd	Jesuit Residence	1999	4,534
---	31 Lawrence Ave	Academic	1979	5,105
---	31 Lawrence Ave Garage	Administrative	1996	1,985
---	32 Mayflower Rd & Garage	Residence	2002	4,833
---	36 College Rd	Administrative	1974	3,766
---	40 Old Colony Rd & Garage	Residence	2001	6,400
---	42 St. Stephens Green	Administrative	2000	8,488
---	43 St. Stephens Green	Administrative	2000	7,951
---	50 College Rd & Garage	Administrative	1996	4,303
---	55 Lee Rd	Administrative	1978	7,363
---	60 Priscilla Rd	Residence	2005	3,919
---	66 Commonwealth Ave	Student Residence & Admin	1989	58,779
---	66 Lee Rd	Residence	1999	2,510
---	90 St. Thomas More Rd	Student Residence	1993	110,488
---	110 St. Thomas More Rd	Student Residence	2005	104,278
---	130 Beacon St	Residence	2002	9,340
---	136 Beacon St & Garage	Residence	2004	4,097
---	142 Beacon St	Administrative	1997	3,446
---	194 Beacon St & Garage	Academic	1996	5,628
---	350 Beacon St	Residence	2001	3,329
---	2121 Commonwealth Ave	TBA	2004	22,799
---	2121 Commonwealth Ave Garage	TBA	2004	580
<b>Total Gross Square Footage<sup>4</sup></b>				<b>6,532,678</b>

<sup>1</sup> GSF excludes all void areas such as "open to below" atrium type space

<sup>2</sup> Property leased to the Jesuit Community of Boston College

<sup>3</sup> Property owned by the Jesuit Community of Boston College

<sup>4</sup> Total GSF excludes Manresa & Roberts

Note: The above statistics exclude properties leased to Boston College. Statistics include only properties owned by Boston College as of May 31, 2006

Source: Office of Space Planning



.....  
**Fall 2006**

---



---

## Spring 2006

<b>Building</b>	<b>Offices</b>	<b>Building</b>	<b>Offices</b>
<b>Brighton Campus</b>		Walsh Hall	12
St. Clements Hall	191	Yawkey Athletics Center	38
<b>Brighton Campus Subtotal</b>	<b>191</b>	14 Mayflower Rd	9
<b>Chestnut Hill Campus</b>		21 Campanella Way	417
Alumni Stadium	18	24 Quincy Rd	8
Bapst Library	8	36 College Rd	10
Botolph House	12	50 College Rd	7
Bourneuf House	9	66 Commonwealth Ave	15
Thea Bowman AHANA Center	7	<b>Chestnut Hill Campus Subtotal</b>	<b>2,306</b>
Brock House	7	<b>Newton Campus</b>	
Campion Hall	150	Alumni House	17
Carney Hall	223	Barat House	9
Conte Forum	81	Kenny-Cottle Library	40
John M. Corcoran Commons	3	Law East Wing	42
Cushing Hall	71	Law Library	25
Devlin Hall	68	Stuart House	98
Donaldson House	6	<b>Newton Campus Subtotal</b>	<b>231</b>
Faber House	6		

## D

### Fall 2006

<b>Dining Halls</b>	<b>Location</b>	<b>Function Rooms</b>	<b>Location</b>
Carney's	McElroy Commons	Boston Room	60 St. Thomas More Road
Eagle's Nest Snack Bar	McElroy Commons	Heights Room	60 St. Thomas More Road
Faculty Dining Room	McElroy Commons	Newton Room	60 St. Thomas More Road
The Chocolate Bar	McElroy Commons	Walsh Function Room	Walsh Hall Room 104
Hillside Café	Campanella Way	The Player's Club	Walsh Hall Room 114
Corcoran Commons	60 St. Thomas More Road	Murray Room	Yawkey Center, 4th Floor
Stuart Dining Hall	Stuart House, Newton Campus		
Dining & Law School Commons	Stuart House, Newton Campus		
Welch Dining Hall	Lyons Hall		

Note: All facilities are on the Chestnut Hill campus unless otherwise noted. University facilities are available for function purposes through the Bureau of Conferences. Function rooms may not be available to all groups.

Source: Facilities Management and Dining Services

---

**By Building, Fall 2006**


---

<b>Residence Hall</b>	<b>Address</b>	<b>Living Units</b>	<b>Students</b>	<b>Staff*</b>	<b>Total</b>
<b>Chestnut Hill Campus</b>					
<b>Upper Campus</b>					
Cheverus Hall	127 Hammond Street	65	156	3	159
Claver Hall	40 Tudor Road	39	92	1	93
Fenwick Hall	46 Tudor Road	97	223	4	227
Fitzpatrick Hall	137 Hammond Street	88	195	4	199
Gonzaga Hall	149 Hammond Street	98	225	4	229
Kostka Hall	149 Hammond Street	80	175	3	178
Loyola Hall	42 Tudor Road	57	114	3	117
Medeiros Townhouses	60 Tudor Road	51	100	3	103
Roncalli Hall	200 Hammond Street	81	166	4	170
Shaw Hall	372 Beacon Street	7	20	1	21
Welch Hall	182 Hammond Street	92	192	4	196
Williams Hall	144 Hammond Street	81	172	4	176
Xavier Hall	44 Tudor Road	51	102	4	106
		<b>887</b>	<b>1,932</b>	<b>42</b>	<b>1,974</b>
<b>Lower Campus</b>					
Edmond's Hall	200 St. Thomas More Road	204	755	16	771
Gabelli Hall	80 Commonwealth Avenue	41	154	2	156
Greycliff Hall	2051 Commonwealth Avenue	30	31	2	33
Ignacio Hall	100 Commonwealth Avenue	64	360	4	364
Modulars	100 St. Thomas More Road	78	435	9	444
Rubenstein Hall	90 Commonwealth Avenue	65	359	4	363
Michael P. Walsh Hall	150 St. Thomas More Road	141	773	16	789
Joseph & Mae Vanderslice Hall	70 St. Thomas More Road	61	413	10	423
Vouté Hall	110 Commonwealth Avenue	57	214	4	218
66 Commonwealth Avenue	66 Commonwealth Avenue	105	227	6	233
90 St. Thomas More Road	90 St. Thomas More Road	60	372	9	381
110 St. Thomas More Road	110 St. Thomas More Road	48	300	6	306
		<b>954</b>	<b>4,393</b>	<b>88</b>	<b>4,481</b>
<b>Newton Campus</b>					
Cushing House	885 Centre Street	64	119	4	123





---

**For the Five Years Ending May 31, 2006 (Dollars in Millions)**

	2002	2003	2004	2005	2006
<b>Operating revenues</b>					
Tuition and fees	\$290.9	\$307.6	\$327.1	\$355.6	\$377.8
Sponsored research and training grants	35.0	35.3	36.2	35.8	39.1
Government grants and student aid	5.5	5.3	5.1	5.3	5.0
Auxiliary enterprises	101.9	106.1	110.0	118.3	126.0
Other revenues	9.4	8.8	11.2	12.2	12.3
<b>Total operating revenues</b>	<b>\$442.7</b>	<b>\$463.1</b>	<b>\$489.6</b>	<b>\$527.2</b>	<b>\$560.2</b>
Nonoperating assets used for operations	41.8	52.1	67.4	62.5	70.5
<b>Total operating revenues and other support</b>	<b>\$484.50</b>	<b>\$515.20</b>	<b>\$557.00</b>	<b>\$589.70</b>	<b>\$630.70</b>
<b>Expenses</b>					
Instruction	\$177.20	\$169.50	\$175.40	\$185.20	\$195.30
Academic Support	-	35.7	38.0	41.0	44.3
Libraries*	18.9	-	-	-	-
Research	19.7	23.1	24.2	24.5	27.7

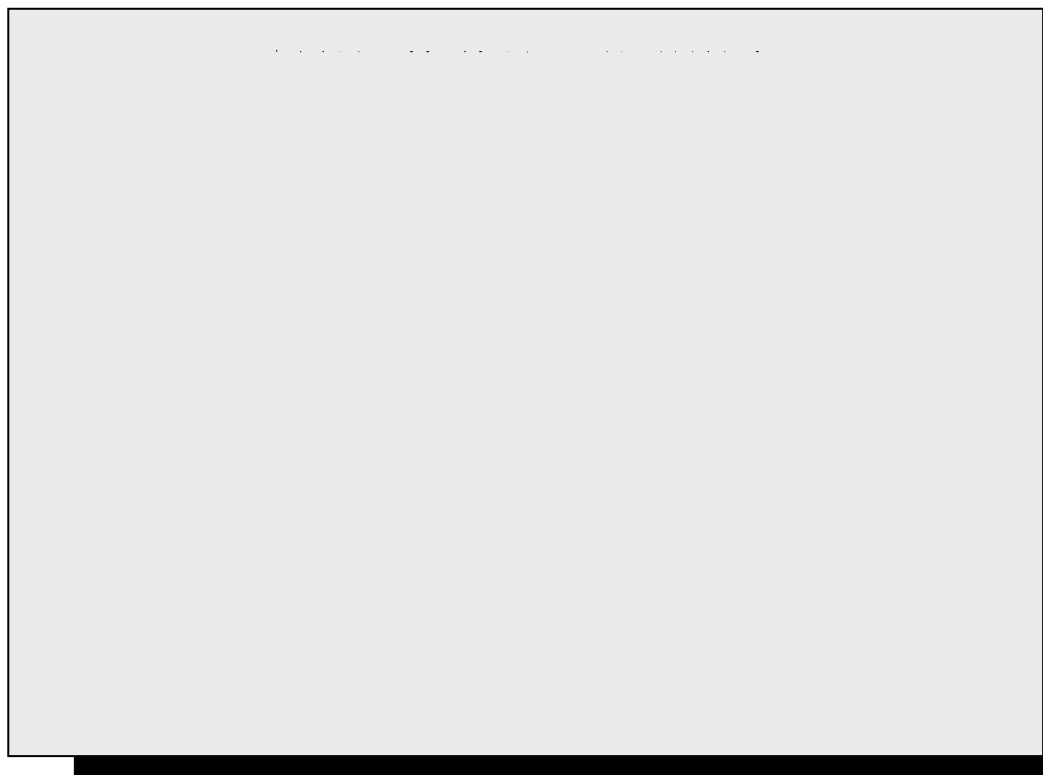
\$561.1  
 Student serv5 0 T7r7 4 0 Tr T7r7 4 0 Tr T7r7 4 0 Tr T7r4.689 0 Td(2)2(7.7)T0.0033227.7

---

**For the Five Years Ending May 31, 2006 (Dollars in Millions)**

	2002	2003	2004	2005	2006
<b>Assets</b>					
Investments	\$1,143.0	\$1,091.2	\$1,313.3	\$1,355.7	\$1,596.7
Trustee deposits	28.9	8.5	78.7	46.2	36.8
Receivables & other assets	200.5	215.1	206.8	195.2	181.0
Physical plant	934.7	997.4	1,042.7	1,212.4	1,267.3
Accumulated depreciation/amortization	(272.70)	(299.80)	(336.50)	(375.20)	(412.70)
<b>Total assets</b>	<b>\$2,034.4</b>	<b>\$2,012.4</b>	<b>\$2,305.0</b>	<b>\$2,434.3</b>	<b>\$2,669.1</b>
<b>Liabilities</b>					
Payables and accrued liabilities	\$97.4	\$95.5	\$118.5	\$140.9	\$165.4
U.S. Government loan advances	32.8	33.6	34.1	34.6	35.3
Bonds, notes & mortgages payable	469.6	463.7	565.3	545.1	536.1
<b>Total liabilities</b>	<b>\$599.8</b>	<b>\$592.8</b>	<b>\$717.9</b>	<b>\$720.6</b>	<b>\$736.8</b>
<b>Net assets</b>					
Endowment	\$1,126.0	\$1,072.7	\$1,224.8	\$1,328.6	\$1,520.3
Net investment in plant	219.0	243.9	220.3	310.7	303.8
Other	89.6	103.0	142.0	74.4	108.2
<b>Total net assets</b>	<b>\$1,434.6</b>	<b>\$1,419.6</b>	<b>\$1,587.1</b>	<b>\$1,713.7</b>	<b>\$1,932.3</b>
<b>Total liabilities &amp; net assets</b>	<b>\$2,034.4</b>	<b>\$2,012.4</b>	<b>\$2,305.0</b>	<b>\$2,434.3</b>	<b>\$2,669.1</b>

Source: Office of the Controller



## For the Ten Years Ending May 31, 2006

	1998	1999	2000	2001	2002	2003	2004	2005	2006	2007
<b>Undergraduate Schools</b>										
Arts & Sciences, Education,										
Management, Nursing	\$19,770	\$20,760	\$21,700	\$22,680	\$24,050	\$25,430	\$27,080	\$28,940	\$30,950	\$33,000
Advancing Studies (per course)	830	872	912	954	1,002	1,054	1,102	1,158	1,216	1,278
Summer Session (per credit hour)	342	360	378	396	416	438	458	458	508	534
<b>Graduate Schools</b>										
Arts & Sciences (per credit hour)	\$596	\$626	\$656	\$700	\$736	\$774	\$810	\$900	\$990	\$1,040
Education, Nursing (per credit hour)	596	626	656	700	722	760	796	836	878	922
Law School	22,300	23,420	24,480	25,790	27,080	28,440	29,720	31,520	33,110	34,770
Management (per credit hour)	680	714	748	792	832	874	914	970	1,020	1,072
MSW part-time (per credit hour)	480	504	526	550	578	608	704	740	778	820
DSW part-time (per credit hour)	552	580	606	634	666	700	704	740	778	820
Advancing Studies (per credit hour)	342	360	378	396	416	438	458	482	508	534
<b>Room Charge Per Student</b>										
Upper Campus	\$4,340	\$4,480	\$4,620	\$4,810	\$5,050	\$5,340	\$5,650	\$5,970	\$6,270	\$6,620
Modulars	5,370	5,540	5,730	5,940	6,260	6,570	6,960	7,350	7,730	8,150
Ignacio & Rubenstein 3-bedroom	5,220	5,390	5,560	5,780	6,080	6,380	6,760	7,140	7,500	7,910
Ignacio & Rubenstein 2-bedroom	5,370	5,540	5,730	5,940	6,260	6,570	6,960	7,350	7,730	8,150
Edmond's Hall	5,370	5,540	5,730	5,940	6,260	6,570	6,960	7,350	7,730	8,051
Newton	4,340	4,480	4,620	4,810	5,050	5,340	5,650	5,970	7,730	6,620
66 Commonwealth Avenue	4,340	4,480	4,620	4,810	5,050	5,340	5,650	7,140	-	6,620
Walsh Hall	4,680	4,830	4,980	5,190	5,450	5,340	6,060	6,400	7,730	7,100
Gabelli & Voute Apartments	5,590	5,770	5,960	6,180	6,510	6,840	7,240	7,650	8,040	8,480
Gabelli & Voute Townhouses	5,860	6,050	6,250	6,470	6,820	7,170	7,590	8,020	8,430	8,890
110 St Thomas More Road	-	-	-	-	-	-	-	-	7,060	7,450
Vanderslice Hall & 90 Campanella Way	4,920	5,080	5,240	5,450	5,730	6,010	6,360	6,720	7,060	7,450
<b>Board Per Student</b>	<b>\$3,430</b>	<b>\$3,540</b>	<b>\$3,630</b>	<b>\$3,700</b>	<b>\$3,810</b>	<b>\$3,650</b>	<b>\$3,650</b>	<b>\$3,650</b>	<b>\$3,900</b>	<b>\$4,100</b>

### Representative Fees

Laboratory (Sci.2.114 0 Td( )-8( )T.5 0 Td(6.5417 -3.666 Td(Re)-8(p)-7(rTd(Re)-8(p)-7)-1(00i2.1 Tc 0.e)-.16w -2.114 S2642(4-7(3397(es)-14(0)T.03397(e2642(6-7(3397(es)-14(7)T.03397(e2



1 2- 4 D \*

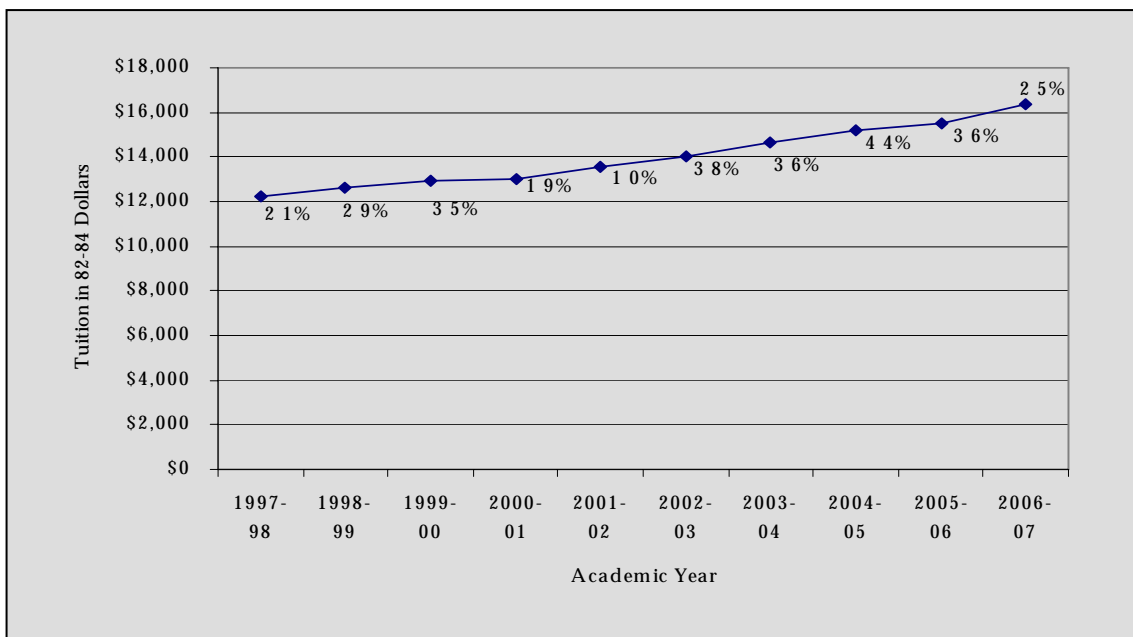
### Effect of Inflation and Real Growth

Academic Year	Tuition in Absolute Dollars	Consumer Price Index**	Tuition in Constant 1982-84 Dollars
1992-93	\$14,580	141.8	\$10,282
1993-94	\$15,570	145.7	\$10,686
1994-95	\$16,640	149.5	\$11,130
1995-96	\$17,890	153.7	\$11,640
1996-97	\$18,820	158.3	\$11,889
1997-98	\$19,770	161.6	\$12,234
1998-99	\$20,760	164.0	\$12,659
1999-00	\$21,700	168.2	\$12,901
2000-01	\$22,680	174.0	\$13,034
2001-02	\$24,050	177.7	\$13,534
2002-03	\$25,430	181.3	\$14,026
2003-04	\$27,080	185.0	\$14,638
2004-05	\$28,940	190.9	\$15,160
2005-06	\$30,950	199.2	\$15,537
2006-07	\$33,000	201.8	\$16,353

The Bureau of Labor Statistics calculates the CPI by setting the average index level for the 36-month period covering the years 1982, 1983, and 1984 equal to 100 (1982-84 = 100). \*\* October CPI for the stated academic year.

Sources: Bureau of Labor Statistics and Office of Institutional Research

%, 1 7- 2006-07  
1 2- 4 D





&

**Bapst Library**  
Middle Campus

**The John J. Burns Library of  
Rare Books and Special Collections**  
Burns Library, Middle Campus

**Geophysics Library**  
Weston Observatory, Weston, MA

**Law Library**  
Newton Campus

**O'Neill Library**  
Central Library, Middle Campus

**School of Social Work Library**  
McGuinn Hall, Lower Level

**Educational Resource Center**  
Campion Hall

**The Connors Family Learning  
Center**  
O'Neill Library

### Fiscal Year 2006

<b>Total Volumes</b>	<b>2,398,157</b>	<b>Total Electronic Serial Subscriptions</b>	<b>41,689</b>
Bapst	51,070	<b>Total e-Books**</b>	<b>283,500</b>
Burns	145,348	<b>Total Microform Units</b>	<b>4,102,490</b>
Educational Resource Center	50,450	Law	1,483,604
Law	238,162	O'Neill	2,618,886
O'Neill	1,613,363		
Social Work*	44,191		



• [Special Collections](#)

The University's special collections, including the University's



The Connors Family Learning Center is a comprehensive, inclusive resource serving all of the University's students and faculty. The mission of the Center is to enhance teaching and learning across the University. One of the CFLC's three professional staff members assists students with learning disabilities, helping to ensure their academic success at Boston College. The Center also sponsors seminars, workshops, and discussions for faculty and graduate teaching fellows on strategies for successful teaching and learning. To address the needs of the great majority of Boston College students, the Center provides tutoring for more than 60 courses, including calculus, statistics, biology, chemistry, nursing, accounting, clco





## Highlights of Sponsored Activities 2005-2006

A total of 349 proposals were submitted in FY2006. The amount of funding requested for the total project period for these proposals was \$160,478,836. In FY2006, Boston College received \$44.4 million in awards for research and sponsored programs activity, based upon receipt of 358 funding actions. FY2006 totals represent the best year in University history. Overall, Boston College faculty

Learning and Work <sup>1</sup>	1	1,120,296	Law School	12	377,767
Center on Wealth and Philanthropy <sup>2</sup>	6	173,000	Learning to Learn Program <sup>4</sup>	2	490,828

**D**  
**Total Accounted Expense (Dollars in Thousands)**

	1996-97	1997-98	1998-99	1999-00	2000-01	2001-02	2002-03	2003-04	2004-05	2005-06
Provost/Dean of Faculties	-	-	-	-	-	-	-	\$68	\$739	\$1,005
Athletics	65	65	62	71	-	-	-	-	-	-
BCRAPL <sup>1</sup>	-	-	-	-	125	108	254	138	107	154
Biology	1,330	1,295	1,170	1,477	1,682	2,087	2,631	2,647	2,990	2,009
CCFCP <sup>2</sup>	-	-	397	618	339	369	396	454	253	715
Center for Corporate Citizenship	33	45	199	212	88	90	384	403	566	395
Center for Ignatian Spirituality	-	-	-	33	16	1	-	-	-	-
Center for Work and Family	36	269	301	308	693	57	29	32	8	39
Center on Aging and Work	-	-	-	-	-	-	-	-	-	756
Center on Wealth & Philanthropy	178	173	155	171	261	275	284	172	279	245
Chemistry	3,270	3,350	4,642	4,429	4,950	5,553	5,567	5,415	5,103	5,214
Church in the 21st Century	-	-	-	-	-	-	-	-	-	47
College of Arts & Sciences	192	142	52	15	-	-	-	-	108	72
Computer Science	-	-	-	-	-	-	-	-	-	89
Economics	341	336	233	109	115	93	153	225	232	234
Fine Arts	8	24	94	32	83	92	110	131	85	20
Geology and Geophysics <sup>3</sup>	497	538	468	384	480	611	469	330	401	503
Graduate School of Social Work	305	402	310	561	553	856	1,398	2,202	2,817	3,201
History	-	92	89	70	54	71	93	89	52	4
Initiatives on Aging	-	-	-	-	-	609	728	729	-	-
Institute for Scientific Research	3,421	3,182	3,417	3,999	4,048	4,771	4,915	5,045	5,061	6,044
International Programs	-	-	-	65	71	26	10	-	-	-
IRE/Pastoral Ministry	-	13	14	1	7	-	-	-	20	121
Irish Institute	-	475	920	741	589	774	671	412	347	551
Law School	276	201	131	342	349	434	287	215	275	397
Learning to Learn	142	152	161	177	184	229	243	294	430	500
Mathematics <sup>4</sup>	691	404	152	287	257	319	316	304	341	140
McMullen Art Museum	-	-	48	38	6	4	35	6	6	-
O'Neill Library	268	28	3	-	-	-	-	-	-	-
Physics	184	337	636	1,612	1,425	1,704	1,707	2,204	1,752	2,053
Political Science	1	151	116	214	268	270	88	179	83	90
Psychology	216	356	283	350	511	449	637	642	713	745
School of Education	2,969	2,676	3,297	3,902	3,962	3,500	3,499	5,199	5,667	4,783
CSTEEP <sup>5</sup>	2,613	3,274	4,715	1,112	2,584	3,210	3,654	1,500	1,030	1,391
International Study Center	-	-	-	5,186	5,299	4,154	2,498	2,915	2,870	3,265
School of Management	481	481	688	1,617	2,375	2,563	2,333	2,715	2,223	2,649
School of Nursing	444	521	554	8,915	8,915	8,915	8,915	8,915	8,915	8,915



**Fiscal Year 1996-97 through 2005-06**

---

**By Department, 1996-1997 through 2005-2006**

	1996-97	1997-98	1998-99	1999-00	2000-01	2001-02	2002-03	2003-04	2004-05	2005-06
Adult Health Nursing	-	-	-	-	-	-	-	-	1	-
Alcohol Education Program	-	-	-	-	-	-	-	-	1	-
Associate VP for Research	-	-	1	1	7	6	7	6	-	-
Arts & Sciences	-	-	1	1	1	-	1	-	-	2
BC Life-Long Learning Institute	-	-	-	-	-	-	-	-	-	1
BCRAPL <sup>1</sup>	-	-	-	3	2	4	2	3	-	1

By Department, 1996-1997 through 2005-2006

	1996-97	1997-98	1998-99	1999-00	2000-01	2001-02	2002-03	2003-04	2004-05	2005-06
Alcohol Education Program	-	-	-	-	-	-	-	-	1	-
Associate VP for Research	-	-	-	2	1	2	1	3	-	-
BCRAPL <sup>1</sup>	-	-	-	2	1	3	6	1	1	-
Biology	16	12	17	16	17	24	20	22	15	20
CCCR <sup>2</sup>	-	-	3	-	-	3	1	5	-	-
CCFCP <sup>3</sup>	1	1	7	1	16	12	7	4	5	9
Center for Corporate Citizenship	-	-	-	-	-	-	-	-	3	3
Center for Work & Family	2	13	6	4	4	1	-	-	1	2
Center on Aging & Work <sup>4</sup>	-	-	-	-	-	-	-	-	-	1
Center on Wealth & Philanthropy	2	2	1	2	-	1	3	2	9	6
Center for Retirement Research	-	-	-	-	-	-	-	-	4	5
Center for Human Rights & Int'l Justice	-	-	-	-	-	-	-	-	-	1
Chemistry	38	46	40	52	45	40	43	51	40	48
Church in the 21 <sup>st</sup> Century	-	-	-	-	-	-	-	-	1	-
Compliance & Property Mgmt	-	-	-	-	-	-	-	-	1	-
Computer Science	-	-	2	-	1	1	1	-	2	1
Economics	5	2	4	3	1	4	-	1	1	1
Finance	-	-	-	-	-	-	-	-	-	1
Fine Arts	1	1	4	3	6	5	8	2	4	3
Geology and Geophysics <sup>5</sup>	4	8	10	9	6	9	5	6	13	20
Graduate School of Arts & Sciences	1	1	1	1	-	-	-	-	2	1
Graduate School of Social Work <sup>6</sup>	11	8	7	16	12	13	29	22	25	23
History	-	3	-	1	3	1	2	-	3	-
Information Systems	-	-	-	-	-	-	-	-	-	1
Institute for Scientific Research	13	17	15	15	42	34	47	42	62	59
Instr'l Design & eTeaching Services	-	-	-	-	-	-	-	-	-	1
Intersections Project	-	-	-	-	-	-	-	-	-	1
IREPM <sup>7</sup>	-	1	-	1	-	-	-	-	2	3
Irish Institute	-	2	2	2	3	3	2	4	1	1
Law School	2	3	3	5	3	7	5	8	9	12
Learning to Learn	1	-	1	2	21	2	1	3	3	2
Mathematics <sup>8</sup>	2	3	5	4	5	4	7	9	9	7
McMullen Museum	-	-	-	-	-	-	-	-	-	1
Music	1	-	-	-	-	-	-	-	-	-
Other	2	3	2	-	2	5	17	9	11	11
Philosophy	1	-	1	-	-	1	-	-	-	-
Physics	10	11	18	25	21	15	17	20	27	25
Political Science	3	6	10	4	6	5	3	3	1	3
Provost and Dean of Faculties	-	-	-	-	-	-	-	-	1	1
Psychology	5	-	9	9	11	11	11	11	11	10

[ d T 0 ( 9 ) ( - 7 l c y s P





---

<u>Name of Center or Institute</u>	<u>Established</u>	<u>Contact Information</u>
Boisi Center for Religion and American Public Life	1999	Alan Wolfe, Director
Boston College Business Institute	1972	Jeffrey L. Ringuest, Associate Dean
Center for Asset Management	2005	Hassan Tehranian, Director
Center for Catholic Education	2006	Michael James, Executive Director
Center for Child, Family, & Community Partnerships	1997	Mary Walsh, Director
Center for Christian-Jewish Learning	2000	Philip A. Cunningham, Executive Director
Center for Corporate Citizenship	1985	Bradley Googins, Executive Director
Center for East Europe, Russia & Asia	1984	





---

	<b>2001-2002</b>	<b>2002-2003</b>	<b>2003-2004</b>	<b>2004-2005</b>	<b>2005-2006</b>
	<b>W-L-T</b>	<b>W-L-T</b>	<b>W-L-T</b>	<b>W-L-T</b>	<b>W-L-T</b>
<b>Men's Records</b>					
Football	8-4	9-4	8-5	9-3	9-3
Basketball	20-12	19-12	24-10	25-5	28-8
Ice Hockey	18-18-2	24-11-4	29-9-4	26-7-7	26-13-3
Soccer	1-8-0				

2005-2006

Sport	# of Teams	# of Participants		
		Male	Female	Total
<b>Fall</b>				
Men's Softball	16	265	n/a	265
Coed Softball	16	175	122	297
Football	64	1,019	64	1,083
Men's Soccer*	24	306	n/a	306
Women's Soccer*	12	n/a	153	153
Volleyball	36	253	240	493
Men's Basketball Tournament	52	461	n/a	461
Women's Basketball Tournament	18	n/a	176	176
Women's Singles Tennis Tournament	n/a	n/a	16	16
Men's Singles Tennis Tournament	n/a	42	n/a	42
Doubles Tennis Tournament	n/a	18	18	36
Coed Iron Eagle Fitness Challenge #1	n/a	-	-	-
Racquetball*	n/a	12	4	16
<b>Winter</b>				
Intermediate Ice Hockey	12	146	22	168
Advanced Ice Hockey	10	122	7	129
Men's Little East B-ball Tournament	24	24	n/a	24
Women's Little East B-ball Tournament	6	n/a	6	6
Men's Soccer	24	285	n/a	285
Women's Soccer	12	n/a	173	173
Men's Basketball	111	1,025	n/a	1,025
Women's Basketball	23	n/a	184	184
<b>Spring</b>				
Men's Singles/Doubles Tennis Tournament	o	18	365	n/a





---

1. John Bapst, S.J.	1863 – 1869	14. Charles W. Lyons, S.J.	1914 – 1919
2. Robert W. Brady, S.J.	1869 – 1870	15. William Devlin, S.J.	1919 – 1925
3. Robert Fulton, S.J.	1870 – 1880	16. James H. Dolan, S.J.	1925 – 1932
4. Jeremiah O'Connor, S.J.	1880 – 1884	17. Louis J. Gallagher, S.J.	1932 – 1937
5. Edward V. Boursaud, S.J.	1884 – 1887	18. William J. McGarry, S.J.	1937 – 1939
6. Thomas H. Stack, S.J.	1887	19. William J. Murphy, S.J.	1939 – 1945
7. Nicholas Russo, S.J.	1887 – 1888	Stack, S. Hy3cGarry, S.J.	193789 – 1945



Rev. Joseph L. Shea, S.J., LL.D.  
Robert Sargent Shriver, Jr., LL.D.\*  
Mary Sullivan Stanton, LL.D.

**1983**

Maya Angelou, L.H.D.  
Virginia A. Henderson, D.N.S.  
Joseph McKenney, D.Ed.  
Rev. Vincent T. O'Keefe, S.J., L.H.D.  
(March 13, 1983)  
Rev. Bruce J. Ritter, O.F.M., D.S.S.\*  
An Wang, LL.D.

**1984**

Leon Higginbotham, LL.D.  
Richard Hill, D.B.A.  
Most Rev. Bernard F. Law, S.T.D.\*  
Robert Merrifield, D.Sc.  
Muriel Sutherland Snowden, D.S.S.  
Otto Phillip Snowden, D.S.S.

**1985**

Rev. Frederick Joseph Adelman, S.J., L.H.D.  
Lena Frances Edwards, D.Sc.  
Rev. J. Bryan Hehir, LL.D.  
Agnes Mongan, D.F.A.  
Anthony John Francis O'Reilly, D.B.A.  
(March 17, 1985)  
Andrew J. Young, LL.D.\*  
Edward Zigler, L.H.D.

**1986**

Corazon C. Aquino, The Ignatius Medal  
(September 21, 1986)  
Guido Calabresi, LL.D.  
Jacques d'Amboise, D.F.A.  
Annie Dillard, L.H.D.  
Lionel B. Richie, Jr., D.Mus.  
Francis C. Rooney, Jr., D.B.A.  
Jamie Cardinal Sin, S.T.D.\*

**1987**

Josephine A. Dolan, D.N.S.  
Garret FitzGerald, LL.D.  
Walter E. Massey, D.Sc.  
John G. McElwee, LL.D.  
Rev. Francis W. Sweeney, S.J., L.H.D.  
Vernon A. Walters, LL.D.\*

**1988**

His Grace, Samuel E. Carter, S.J., S.T.D.\*  
Esmé Valerie Eliot, Litt.D.  
Hans-Georg Gadamer, L.H.D.  
Robert Francis O'Malley, D.Sc.  
Richard Alan Smith, LL.D.  
Paul A. Volcker, LL.D.

**1989**

Thea Bowman, F.S.P.A., R.D.  
George E. Doty, The Ignatius Medal  
(April 6, 1989)  
Jonathan Kozol, D.S.S.\*  
Thomas S. Murphy, LL.D.  
Kenneth Gilmore Ryder, D.Sc..2(u) L.H.D.

**2002**

Rev. Robert J. Bowers, L.H.D.  
R. Nicholas Burns, LL.D.\*  
Charles Dolan, The President's Medal for  
Excellence (April 18, 2002)  
Sara Lawrence-Lightfoot, L.H.D.  
Rev. John W. O'Malley, S.J., L.H.D.  
Sister Marie Santry, S.N.D. de Namur, L.H.D.  
Elisabeth Zweig Leoni, D.Pub.Adm.

**2003**

Kathleen Carr, C.S.J., L.H.D.  
John L. Mahoney, L.H.D.  
Dawn E. McNair, L.H.D.  
Robert L. Reynolds, The President's Medal  
for Excellence (April 23, 2003)  
Thomas A. Vanderslice, D.B.A.  
Erik Weihenmayer, L.H.D. \*

**2004**

Thomas Anthony Busch, L.H.D.  
Alan Greenspan, LL.D.  
(March 12, 2004)  
Ray Alexander Hammond II, L.H.D.  
Wellington T. Mara, The President's Medal  
for Excellence (April 15, 2004)  
Timothy John Russert, LL.D. \*  
Katarina Schuth, O.S.F., Litt.D.  
Blenda J. Wilson, D. Pub. Adm.

**2005**

Romeo Antonius Dallaire, LL.D.  
Sr. Janet Eisner, SND, L.H.D.  
Paul E. Farmer, M.D., LL.D.\*  
Norman Christopher Francis, L.H.D.  
Greg Norman, The President's Medal  
for Excellence (April 28, 2005)

Most Rev. Sean Patrick O'Malley,  
OFM Cap., S.T.D.  
Sara Martinez Tucker, L.H.D.

**2006**

Kenneth F. Hackett, L.H.D.  
Pierre Jona Imbert, D.Pub.Adm.  
Anne M. Mulcahy, The President's Medal  
for Excellence (April 27, 2006)  
u2D0.00.4(. )ct(Aof\*LL1(-Lit2rature-0.002 Tc-5031 T[R.



---

**D**


---

Accounting Department, CSOM	Fulton 520
Advancing Studies, Woods College of	McGuinn 100
Arts and Sciences, College of	Gasson 109A
Arts and Sciences, Graduate School of	McGuinn 221
Biology Department	Higgins 355
Business Law Department, CSOM	Fulton 420
Chemistry Department	Merkert 125
Classical Studies Department	Carney 122
Communication Department	21 Campanella Way 513A
Computer Science Department	Fulton 460
Counseling, Developmental, and Educational Psychology, LSOE	Campion 309
Counseling Services, University	Gasson 108, Campion 301, Fulton 254
Economics Department	21 Campanella Way 412
Educational Administration and Higher Education Department, LSOE	Campion 205
Educational Research, Measurement, and Evaluation, LSOE	Campion 323
Education, Lynch School of	Campion 101
English Department	Carney 446
Finance Department, CSOM	Fulton 330
Fine Arts Department	Devlin 434
Geology and Geophysics Department	Devlin 213
German Studies Department	Lyons 201
History Department	21 Campanella Way 412
Honors Program	
Arts and Sciences	Gasson 102
Education	Campion 104
Management	Fulton 226
Information Systems Department, CSOM	Fulton 460
Law School	Stuart Hall, Newton Campus
Management Center, Carroll School of	Fulton 510
Management, Graduate Program, Carroll School of	Fulton 320
Management, Undergraduate Program, Carroll School of	Fulton 360
Marketing Department, CSOM	Fulton 450

**2006-2007****Fall Semester**

September 4	Monday	Labor Day—No classes
September 5	Tuesday	Classes begin
October 9	Monday	Columbus Day—No classes
November 22 - 24	Wednesday - Friday	Thanksgiving Holidays
December 9 - 11	Saturday - Monday	Study days—No classes for undergraduate day students only
December 12 - 19	Tuesday - Tuesday	Term Examinations

**Spring Semester**

January 15	Monday	Martin Luther King, Jr. Day— No classes
January 16	Tuesday	Classes begin
March 5 - 9	Monday - Friday	Spring Vacation
April 5 - 9	Thursday - Monday	Easter Weekend—No classes
		Holy Thursday, Good Friday, Easter Monday (except classes beginning at 4:00 p.m. and later)
April 16	Monday	Patriots Day—No classes
May 4 - 7	Friday - Monday	Study Days—No classes for undergraduate day students only
May 8 - 15	Tuesday - Tuesday	Term Examinations
May 21	Monday	Commencement

**2007-2008****Fall Semester**

September 3	Monday	Labor Day—No classes
September 4	Tuesday	Classes begin
October 8	Monday	Columbus Day—No classes
November 21 - 23	Wednesday - Friday	Thanksgiving Holidays
December 11 - 12	Tuesday - Wednesday	Study days—No classes for undergraduate day students only
December 13 - 20	Thursday - Thursday	Term Examinations

**Spring Semester**

January 14	Monday	Classes begin
January 21	Monday	Martin Luther King, Jr. Day— No classes
March 3 - 7	Monday - Friday	Spring Vacation
March 20 - 24	Thursday - Monday	Easter Weekend—No classes
		Holy Thursday, Good Friday, Easter Monday (except classes beginning at 4:00 p.m. and later)
April 21	Monday	Patriots Day—No classes
May 2 - 5	Friday - Monday	Study days—No classes for undergraduate day students only
May 6 - 13	Tuesday - Tuesday	Term Examinations
May 19	Monday	Commencement

**2006-2007**

Alumni Association  
BCAA Compliance Office  
Budget Office  
Capital Project Management  
Connors Family Learning Center  
Controller's Office  
Dean for Student Development  
Deans' Offices  
Dining Services  
Enrollment Management Research  
Flynn Recreation Complex  
Human Resources  
Information Technology Services  
Institutional Research  
International Programs  
Jesuit Community  
Language Laboratory  
Marketing Communications  
McMullen Museum of Art  
Media Relations, Athletics Association

- 
- Academic Administration, 15  
 Academic Calendars, 102  
 Academic Department Locations, 101  
 Academic Resources and Technologies, 76-80  
 Accrediting Agencies, 100  
 Administration and Faculty, 12-25  
 Administrators, University, 19  
 AHANA and International Student Enrollment, 32  
 Alumni and Development, 50-57  
 Alumni Association Board of Directors, 50  
 Alumni Achievement Awards, 50  
 Alumni by Gender and Class, 54  
 Alumni by Primary School and Class, 52-53  
 Alumni Regional Chapters, 50  
 Alumni Donors by Primary School and Class, 56-57  
 Alumni, Geographic Distribution, 51  
 Applications, Acceptances, and Enrollment, Freshmen, 29  
 Applications, Acceptances, and Enrollment, Transfer Students, 30  
 Archives, 78  
 Art Museum, 80  
 Association Memberships, 100  
 Athletics, 92-93
- Board of Trustee Associate Memberships, 13-14  
 Board of Trustee Chairmen, 14  
 Board of Trustee Membership, 12  
 Boston College, A Brief History, 6  
 Boston College, A Chronology, 7-9  
 Boston College Profile, 10  
 Boston College Properties, 63  
 Building Use, Summary, 64  
 Buildings and Grounds, See Physical Plant  
 Buildings, Boston College, 60-62  
 Burns Library, 78
- Campus Maps, 105-107  
 Chairmen, Board of Trustees, 14  
 Chairpersons, Department, 20  
 Charts of Administration, 16-18  
 Classrooms, 64  
 Compensation, Faculty, 25  
 Connors Family Learning Center, 80  
 Contracts and Grants, See Research & Sponsored Projects  
 Credit Hours by School, 31  
 Cross Application Competitor Schools, 30
- Deans, Academic, See Academic Administration  
 Degrees Conferred at Boston College, Types, 99  
 Degrees Conferred, 41-45  
 Department Chairpersons, 20  
 Development Statistics, 51-57  
 Dining Facilities, 66
- Donors by Giving Club, 55  
 Dormitories, See Residence Halls  
 Email Deliveries, 79  
 Enrollment, Full-Time Equivalent, 33  
 Enrollment, Full-Time Freshman by Year and Gender, 28  
 Enrollment, Graduate, by School, Gender, and Full- and Part-Time, 31, 32  
 Enrollment, International Students, 39, 40  
 Enrollment, Minority Students, See AHANA
- Enrollment, Summer Session, 34  
 Enrollment, Transfer Students, 30  
 Enrollment, Undergraduate by School, Gender, and Full- and Part-Time, 31, 32  
 Enrollment, Undergraduate Majors by School, 36  
 Enrollment, Undergraduate Minors by School, 37  
 Executive Vice President Units, 18
- Facilities, See Physical Plant  
 Facility Capacities, 64  
 Faculty, Administration and Facilities Statistics, 51-57

( )

---

Grant Statistics, See Research and Sponsored Projects

History, Boston College, 6-9

Honorary Degrees Awarded, 96-99

Honorary Degrees, Types Granted, 99

Information Technology Services, 79

Intercollegiate Sports Participation, 92

International Student and Scholar Statistics, 39-40

Intramural Sports Participation, 93

Jesuit Community at Boston College, 14

Language Laboratory, 78

Libraries, 76

Library Expenditures, 76

Library Holdings, 76

Library Services, 77

Library Special Collections, 78

Majors, Undergraduate, 36

Maps, Campus, 105-107

McMullen Museum of Art, 80

Minority Student Enrollment, See AHANA

Minors, Undergraduate, 37

Mission Statement, 2

Officers of the University, 15

Offices, 65

Organization Chart, Administration, 16

Organization Chart, Provost and Dean of Faculties, 17

Organization Chart, Executive Vice President, 18

Personnel, Professional, Administrative, and Support

Staff, 21

Personnel, Restricted Funded, 21

Physical Plant, 60-67

Presidents of Boston College, 96

Professional, Administrative, and Support Staff

Personnel, 21

Profile, Boston College, 10

Properties, Boston College, 63

Provost and Dean of Faculties Units, 17

Research and Sponsored Projects, 82-91

Research Institutes and Centers, 89

Residence Hall Statistics by Building, 67

Restricted Funded Personnel, 21

Retention, Graduation Rates, 47

SAT, Middle Range, Freshman, 28

Sources of Fact Book Information, 102

Sponsored Activities, Highlights, 82

Sponsored Project Awards Summary, 82

Sponsored Projects by Department, 83

Sponsored Projects, Number Awards Received, 87

Sponsored Projects Dollar Amount Awards Received, 84

Sponsored Projects, Proposals Submitted, 86

Sponsored Projects, Selected Awards, 88

Sponsored Projects, Source and Application, 82

Sports Participation, Intercollegiate Statistics, 92